

For Research Use Only

# CoraLite® Plus 647 Anti-Human CD123 (HI12H7)



Catalog Number: CL647-65256

## Basic Information

<b>Catalog Number:</b> CL647-65256	<b>GenBank Accession Number:</b> BC035407	<b>Purification Method:</b> Affinity purification
<b>Size:</b> 100tests , 5 µl/test	<b>GeneID (NCBI):</b> 3563	<b>CloneNo.:</b> HI12H7
<b>Source:</b> Mouse	<b>Full Name:</b> interleukin 3 receptor, alpha (low affinity)	<b>Excitation/Emission maxima wavelengths:</b> 654 nm / 674 nm
<b>Isotype:</b> IgG1, kappa	<b>Calculated MW:</b> 378 aa, 43 kDa	

## Applications

**Tested Applications:**  
FC

**Species Specificity:**  
Human

## Background Information

### Storage

**Storage:**  
Store at 2-8°C. Avoid exposure to light. Stable for one year after shipment.  
**Storage Buffer:**  
PBS with 0.09% sodium azide and 0.5% BSA.

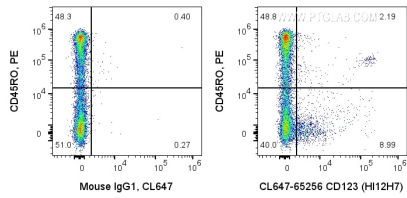
For technical support and original validation data for this product please contact:

T: 1 (888) 4PTGLAB (1-888-478-4522) (toll free  
in USA), or 1(312) 455-8498 (outside USA)

E: [proteintech@ptglab.com](mailto:proteintech@ptglab.com)  
W: [ptglab.com](http://ptglab.com)

This product is exclusively available under Proteintech Group brand and is not available to purchase from any other manufacturer.

## Selected Validation Data



1X10<sup>6</sup> human PBMCs were surface co-stained with PE Anti-Human CD45RO and 5 ul CoraLite® Plus 647 Anti-Human CD123 (CL647-65256, Clone:HI 12H7), or Mouse IgG1 Isotype Control. Cells were not fixed. Lymphocytes were gated.