

For Research Use Only

CoraLite® Plus 647 Anti-Human CD26 (BA5b)



Catalog Number: CL647-65267

Basic Information

Catalog Number: CL647-65267	GenBank Accession Number: BC013329	Purification Method: Affinity purification
Size: 100tests , 5 µl/test	GeneID (NCBI): 1803	CloneNo.: BA5b
Source: Mouse	Full Name: dipeptidyl-peptidase 4	Excitation/Emission maxima wavelengths: 654 nm / 674 nm
Isotype: IgG2a, kappa	Calculated MW: 88 kDa	

Applications

Tested Applications:
FC

Species Specificity:
Human

Background Information

CD26, also known as DPP4 (dipeptidyl peptidase-4), is a 110 kDa type II cell-surface glycoprotein widely expressed on T cells, activated B cells, activated NK cells and myeloid cells as well as on epithelial cells, fibroblasts, mesothelium, and endothelial cells of a variety of tissues (PMID:33777580; 26919392). It has ecto-enzyme activity in its extracellular domain and cleaves amino-terminal dipeptides with either L-proline or L-alanine at the penultimate position (PMID: 9553764). CD26 plays roles in diverse biological processes such as immunoregulation, glucose homeostasis, and tumorigenesis (PMID: 33777580).

Storage

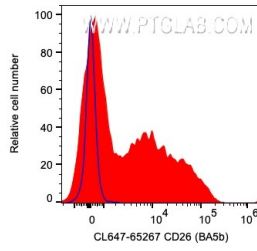
Storage:
Store at 2-8°C. Avoid exposure to light. Stable for one year after shipment.

Storage Buffer:
PBS with 0.09% sodium azide and 0.5% BSA.

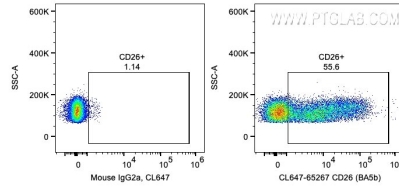
For technical support and original validation data for this product please contact:
T: 1 (888) 4PTGLAB (1-888-478-4522) (toll free in USA), or 1(312) 455-8498 (outside USA) E: proteintech@ptglab.com W: ptglab.com

This product is exclusively available under Proteintech Group brand and is not available to purchase from any other manufacturer.

Selected Validation Data



1X10⁶ human PBMCs were surface stained with 5 ul CoraLite® Plus 647 Anti-Human CD26 (CL647-65267, Clone:BA5b) (red) or Mouse IgG2a Isotype Control. Cells were not fixed. Lymphocytes were gated.



1X10⁶ human PBMCs were surface stained with 5 ul CoraLite® Plus 647 Anti-Human CD26 (CL647-65267, Clone:BA5b) or Mouse IgG2a Isotype Control. Cells were not fixed. Lymphocytes were gated.