

For Research Use Only

# CoraLite® Plus 647 Anti-Human ICAM-1/CD54 (15.2) Rabbit IgG Recombinant Antibody

Catalog Number: **CL647-65509**



## Basic Information

Catalog Number:

CL647-65509

Size:

100 tests, 5 µl/test

Source:

Rabbit

Isotype:

IgG

GenBank Accession Number:

BC015969

GeneID (NCBI):

3383

ENSEMBL Gene ID:

ENSG00000090339

Full Name:

intercellular adhesion molecule 1

Calculated MW:

90 kDa

Purification Method:

Affinity purification

CloneNo.:

15.2

Excitation/Emission maxima wavelengths:

654 nm / 674 nm

## Applications

Tested Applications:

FC

Species Specificity:

human

## Background Information

ICAM-1 (CD54) is a 90-kDa transmembrane glycoprotein of the immunoglobulin superfamily and is critical for the firm attachment and transmigration of leukocytes out of blood vessels and into tissues (PMID: 19307690). ICAM-1 is expressed by several cell types, typically on endothelial cells and cells of the immune system, and its expression can be up-regulated by various stimuli, including TNF- $\alpha$ , INF- $\gamma$ , IL-1 and thrombin (PMID: 3086451; 9694714; 15979056). It is a ligand for LFA-1 and Mac-1, serves as a receptor for rhinovirus, and is one of several receptors used by *Plasmodium falciparum* (PMID: 2566624; 2538244; 2475784).

## Storage

Storage:

Store at 2-8°C. Avoid exposure to light. Stable for one year after shipment.

Storage Buffer:

PBS with 0.09% sodium azide and 0.5% BSA.

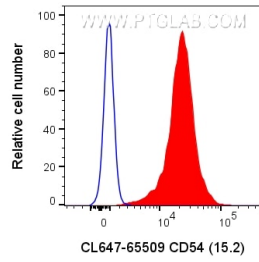
For technical support and original validation data for this product please contact:

T: 1 (888) 4PTGLAB (1-888-478-4522) (toll free in USA), or 1(312) 455-8498 (outside USA)

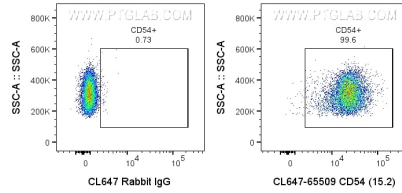
E: [proteintech@ptglab.com](mailto:proteintech@ptglab.com)  
W: [ptglab.com](http://ptglab.com)

This product is exclusively available under Proteintech Group brand and is not available to purchase from any other manufacturer.

## Selected Validation Data



1x10<sup>6</sup> human PBMCs were surface stained with 5 ul CoraLite® Plus 647 Anti-Human CD54 Rabbit Recombinant Antibody (CL647-65509, Clone:15.2) or CoraLite® Plus 647-conjugated Rabbit IgG control PolyAb (CL647-30000). Cells were not fixed. Cells were treated with FC Receptor Block prior to staining. Monocytes were gated.



1x10<sup>6</sup> human PBMCs were surface stained with 5 ul CoraLite® Plus 647 Anti-Human CD54 Rabbit Recombinant Antibody (CL647-65509, Clone:15.2) or CoraLite® Plus 647-conjugated Rabbit IgG control PolyAb (CL647-30000). Cells were not fixed. Cells were treated with FC Receptor Block prior to staining. Monocytes were gated.