

For Research Use Only



CoraLite® Plus 647 Anti-Human CD5 (UCHT2) Rabbit Recombinant Antibody

Catalog Number: **CL647-65513**

Basic Information

Catalog Number: CL647-65513	GenBank Accession Number: BC027901	Purification Method: Affinity purification
Size: 100tests , 5 µl/test	GeneID (NCBI): 921	CloneNo.: UCHT2
Source: Rabbit	ENSEMBL Gene ID: ENSG00000110448	Excitation/Emission maxima wavelengths: 654 nm / 674 nm
Isotype: IgG	Full Name: CD5 molecule	
	Calculated MW: 495 aa, 55 kDa	

Applications

Tested Applications:
FC

Species Specificity:
Human

Background Information

CD5 is a type I transmembrane glycoprotein of the scavenger receptor cysteine-rich family (PMID: 12403363). CD5 is expressed on a majority of thymocytes, mature T cells, B cell subsets, and peripheral blood dendritic cells (PMID: 9858516; 6156984; 10379049; 1384337). CD5 may act as a receptor in regulating T-cell proliferation. It functions as a negative regulator of TCR signaling during thymocyte development (PMID: 7542801).

Storage

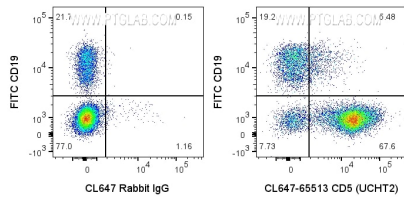
Storage:
Store at 2-8°C. Avoid exposure to light. Stable for one year after shipment.

Storage Buffer:
PBS with 0.09% sodium azide and 0.5% BSA.

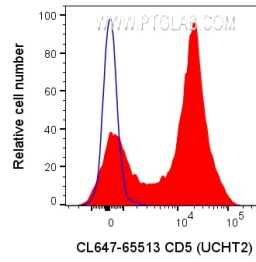
For technical support and original validation data for this product please contact:
T: 1 (888) 4PTGLAB (1-888-478-4522) (toll free in USA), or 1(312) 455-8498 (outside USA)
E: proteintech@ptglab.com
W: ptglab.com

This product is exclusively available under Proteintech Group brand and is not available to purchase from any other manufacturer.

Selected Validation Data



1x10⁶ human PBMCs were surface stained with FITC Anti-Human CD19 and 5 ul CoraLite® Plus 647 Anti-Human CD5 Rabbit Recombinant Antibody (CL647-65513, Clone:UCHT2) or CoraLite® Plus 647-conjugated Rabbit IgG control PolyAb (CL647-30000). Cells were not fixed. Lymphocytes were gated.



1x10⁶ human PBMCs were surface stained with 5 ul CoraLite® Plus 647 Anti-Human CD5 Rabbit Recombinant Antibody (CL647-65513, Clone:UCHT2) or CoraLite® Plus 647-conjugated Rabbit IgG control PolyAb (CL647-30000). Cells were not fixed. Lymphocytes were gated.