

For Research Use Only

CoraLite® Plus 647 Anti-Human CD107a (H4A3) Rabbit Recombinant Antibody



Catalog Number: **CL647-65549**

Basic Information

Catalog Number: CL647-65549	GenBank Accession Number: BC006345	Purification Method: Affinity purification
Size: 100tests , 5 µl/test	GeneID (NCBI): 3916	CloneNo.: H4A3
Source: Rabbit	ENSEMBL Gene ID: ENSG00000185896	Excitation/Emission maxima wavelengths: 654 nm / 674 nm
Isotype: IgG	Full Name: lysosomal-associated membrane protein 1	

Applications

Tested Applications:
FC (Intra)

Species Specificity:
Human

Background Information

LAMP1 (also known as CD107a) is a 90-120 kDa heavily glycosylated membrane protein enriched in the lysosomal membrane. LAMP1 functions to provide selectins with carbohydrate ligands. This protein has also been shown to be a marker of degranulation on lymphocytes such as CD8+ and NK cells and may also play a role in tumor cell differentiation and metastasis.

Storage

Storage:
Store at 2-8°C. Avoid exposure to light. Stable for one year after shipment.
Storage Buffer:
PBS with 0.09% sodium azide and 0.5% BSA.

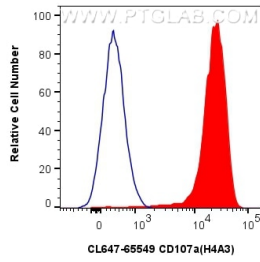
For technical support and original validation data for this product please contact:

T: 1 (888) 4PTGLAB (1-888-478-4522) (toll free in USA), or 1(312) 455-8498 (outside USA)

E: proteintech@ptglab.com
W: ptglab.com

This product is exclusively available under Proteintech Group brand and is not available to purchase from any other manufacturer.

Selected Validation Data



1x10⁶ Jurkat cells were intracellularly stained with 5 μ l CoraLite® Plus 647 Anti-Human CD107a (H4A3) Rabbit Recombinant Antibody (CL647-65549, Clone:H4A3)(red), or CoraLite® Plus 647-conjugated Rabbit IgG control Rabbit PolyAb (CL647-30000) (blue). Cells were fixed with 4% PFA and permeabilized with Flow Cytometry Perm Buffer (PF00011-C).