

CoraLite® Plus 647 Anti-Human CD3 (UCHT1) Rabbit Recombinant Antibody

Catalog Number: **CL647-65554**

Basic Information

Catalog Number: CL647-65554	GenBank Accession Number: BC049847	Purification Method: Affinity purification
Size: 100tests , 5 µl/test	GeneID (NCBI): 916	CloneNo.: UCHT1
Source: Rabbit	ENSEMBL Gene ID: ENSG00000198851	Excitation/Emission maxima wavelengths: 654 nm / 674 nm
Isotype: IgG	Full Name: CD3e molecule, epsilon (CD3-TCR complex) Calculated MW: 207 aa, 23 kDa	

Applications

Tested Applications:
FC
Species Specificity:
Human

Background Information

CD3 is a multimeric protein associated with the T-cell receptor (TCR) to form a complex involved in antigen recognition and signal transduction (PMID: 15885124). CD3 is composed of CD3γ, δ, ε, and ζ chains (PMID: 1826255). It is expressed by thymocytes in a developmentally regulated manner, T cells, and some NK cells (PMID: 3289580). The TCR recognizes antigens bound to major histocompatibility complex (MHC) molecules. TCR-mediated peptide-MHC recognition is transmitted to the CD3 complex, leading to the intracellular signal transduction (PMID: 11985657).

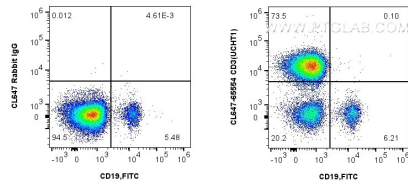
Storage

Storage:
Store at 2-8°C. Avoid exposure to light. Stable for one year after shipment.
Storage Buffer:
PBS with 0.09% sodium azide and 0.5% BSA.

For technical support and original validation data for this product please contact:
T: 1 (888) 4PTGLAB (1-888-478-4522) (toll free in USA), or 1(312) 455-8498 (outside USA)
E: proteintech@ptglab.com
W: ptglab.com

This product is exclusively available under Proteintech Group brand and is not available to purchase from any other manufacturer.

Selected Validation Data



1x10⁶ human PBMCs were surface stained with 5 ul CoraLite® Plus 647 Anti-Human CD3 Rabbit Recombinant Antibody (CL647-65554, Clone: UCHT1) or CoraLite® Plus 647-conjugated Rabbit IgG control (CL647-30000), and 5 ul FITC Plus Anti-Human CD19 (HIB19) (FITC-65110, Clone: HIB19). Cells were not fixed. Lymphocytes were gated.