

For Research Use Only



CoraLite® Plus 647 Anti-Human CD64 (10.1) Mouse IgG2a Recombinant Antibody

Catalog Number: **CL647-65572**

Basic Information

Catalog Number: CL647-65572	GenBank Accession Number: BC032634	Purification Method: Protein A purification
Size: 100tests , 5 µl/test	GeneID (NCBI): 2209	CloneNo.: 10.1
Source: Mouse	ENSEMBL Gene ID: ENSG00000150337	Excitation/Emission maxima wavelengths: 654 nm / 674 nm
Isotype: IgG2a	Full Name: Fc fragment of IgG, high affinity Ia, receptor (CD64) Calculated MW: 374 aa, 43 kDa	

Applications

Tested Applications:
FC
Species Specificity:
Human

Background Information

Fcγ receptor comprise a multigene family of integral membrane glycoproteins that exhibit complex activation or inhibitory effects on cell functions after aggregation by complexed immunoglobulin G (IgG) (PMID: 17005690). CD64, also known as Fcγ R1A, is a high-affinity receptor for the Fc region of IgG. It is expressed by monocytes/macrophages, activated neutrophils, dendritic cells, and early myeloid cells (PMID: 23293080; 19642859; 7680917). CD64 functions in both innate and adaptive immune responses.

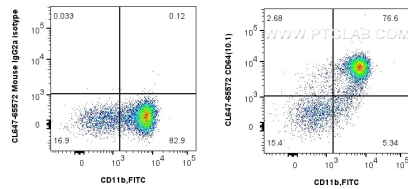
Storage

Storage:
Store at 2-8°C. Avoid exposure to light. Stable for one year after shipment.
Storage Buffer:
PBS with 0.09% sodium azide and 0.5% BSA.

For technical support and original validation data for this product please contact:
T: 1 (888) 4PTGLAB (1-888-478-4522) (toll free in USA), or 1(312) 455-8498 (outside USA)
E: proteintech@ptglab.com
W: ptglab.com

This product is exclusively available under Proteintech Group brand and is not available to purchase from any other manufacturer.

Selected Validation Data



1x10⁶ human PBMCs were surface stained with 5 μ l Coralite® Plus 647 CD64 Recombinant Antibody (CL647-65572, Clone:10.1) or Coralite® Plus 647 Mouse IgG2a Isotype Control (C1.18.4) (CL647-65208, Clone: C1.18.4). Cells were then stained with FITC Anti-Human CD11b (ICRF44). Cells were not fixed. Monocytes were gated.