

For Research Use Only

# CoraLite® Plus 647 Anti-Human CD58 (TS2/9) Mouse IgG2a Recombinant Antibody

Catalog Number: **CL647-65597**



## Basic Information

Catalog Number:

CL647-65597

Size:

100 tests, 5 µl/test

Source:

Mouse

Isotype:

IgG2a

GenBank Accession Number:

BC005930

GeneID (NCBI):

965

Full Name:

CD58 molecule

Calculated MW:

28 kDa

Purification Method:

Protein A purification

CloneNo.:

TS2/9

Excitation/Emission maxima wavelengths:

654 nm / 674 nm

## Applications

Tested Applications:

FC

Species Specificity:

human

## Background Information

CD58, also known as lymphocyte function-associated antigen 3 (LFA-3), is a heavily glycosylated protein of 55-70 kDa that is expressed on a broad range of hematopoietic and non-hematopoietic cells. CD58 is involved in immune recognition of tumor cells via binding of the CD2 receptor expressed on cytotoxic T cells.

## Storage

Storage:

Store at 2-8°C. Avoid exposure to light. Stable for one year after shipment.

Storage Buffer:

PBS with 0.09% sodium azide and 0.5% BSA.

For technical support and original validation data for this product please contact:

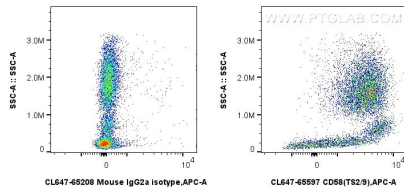
T: 1 (888) 4PTGLAB (1-888-478-4522) (toll free in USA), or 1(312) 455-8498 (outside USA)

E: [proteintech@ptglab.com](mailto:proteintech@ptglab.com)

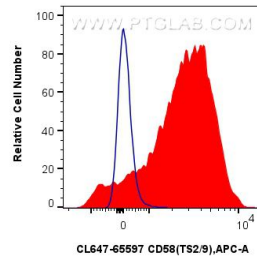
W: [ptglab.com](http://ptglab.com)

This product is exclusively available under Proteintech Group brand and is not available to purchase from any other manufacturer.

## Selected Validation Data



1x10<sup>6</sup> human peripheral blood leukocytes were surface stained with 5 ul CoraLite® Plus 647 Anti-Human CD58 (TS2/9) Mouse IgG2a RecAb (CL647-65597, Clone: TS2/9) or CoraLite® Plus 647 Mouse IgG2a Isotype Control (C1.18.4) (CL647-65208, Clone: C1.18.4). Cells were incubated with FC Receptor Block prior to staining. Cells were not fixed.



1x10<sup>6</sup> human peripheral blood leukocytes were surface stained with 5 ul CoraLite® Plus 647 Anti-Human CD58 (TS2/9) Mouse IgG2a RecAb (CL647-65597, Clone:TS2/9) (red) or CoraLite® Plus 647 Mouse IgG2a Isotype Control (C1.18.4) (CL647-65208, Clone: C1.18.4) (blue). Cells were incubated with FC Receptor Block prior to staining. Cells were not fixed.