

For Research Use Only

# CoraLite® Plus 647 Anti-Mouse CD11c (N418) Mouse IgG2a Recombinant Antibody

Catalog Number: CL647-65602



## Basic Information

Catalog Number:

CL647-65602

Size:

100ug , 500 µg/ml

Source:

Mouse

Isotype:

IgG2a

GenBank Accession Number:

BC167225

GeneID (NCBI):

16411

Full Name:

integrin alpha X

Purification Method:

Protein A purification

CloneNo.:

N418

Excitation/Emission maxima wavelengths:

654 nm / 674 nm

## Applications

Tested Applications:

FC

Species Specificity:

mouse

## Background Information

Integrins are cell adhesion receptors that are heterodimers composed of non-covalently associated  $\alpha$  and  $\beta$  subunits (PMID: 9779984). CD11c, also known as integrin  $\alpha X$ , is a type I transmembrane glycoprotein present on a variety of cells, including monocytes/macrophages, granulocytes, a subset of B cells, NK cells and dendritic cells (PMID: 2897326; 1680915; 1694698; 17389580). As a result of its high level of expression on most dendritic cells, CD11c is typically considered to be a marker of conventional dendritic cells (PMID: 27119555). CD11c forms an  $\alpha/\beta$  heterodimer with CD18 (integrin  $\beta 2$ ). CD11c/CD18 acts a receptor for fibrinogen and is important in monocyte adhesion and chemotaxis (PMID: 1671533).

## Storage

Storage:

Store at 2-8°C. Avoid exposure to light. Stable for one year after shipment.

Storage Buffer:

PBS with 0.09% sodium azide and 0.5% BSA.

For technical support and original validation data for this product please contact:

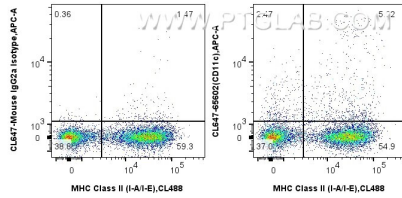
T: 1 (888) 4PTGLAB (1-888-478-4522) (toll free in USA), or 1(312) 455-8498 (outside USA)

E: [proteintech@ptglab.com](mailto:proteintech@ptglab.com)

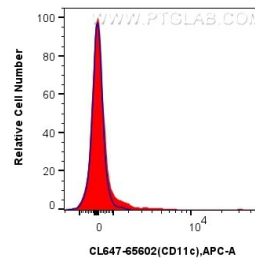
W: [ptglab.com](http://ptglab.com)

This product is exclusively available under Proteintech Group brand and is not available to purchase from any other manufacturer.

## Selected Validation Data



1x10<sup>6</sup> mouse splenocytes were surface stained with 0.25 ug CoraLite® Plus 647 Anti-Mouse CD11c (N418) Mouse IgG2a Recombinant Antibody (CL647-65602, Clone:N418) or CoraLite® Plus 647 Mouse IgG2a Isotype Control (C1.18.4) (CL647-65208, Clone: C1.18.4). Cells were then co-stained with CoraLite® Plus 488 Anti-Mouse MHC Class II (I-A/I-E) (M5/114.15.2) (CL488-65122, Clone: M5/114.15.2). Cells were not fixed.



1x10<sup>6</sup> mouse splenocytes were surface stained with 0.25 ug CoraLite® Plus 647 Anti-Mouse CD11c (N418) Mouse IgG2a Recombinant Antibody (CL647-65602, Clone:N418)(red) or CoraLite® Plus 647 Mouse IgG2a Isotype Control (C1.18.4) (CL647-65208, Clone: C1.18.4)(blue). Cells were not fixed.