

For Research Use Only

CoraLite® Plus 647 Anti-Human CD25/IL-2RA (BC96) Mouse IgG2a Recombinant Antibody

Catalog Number: CL647-65620



Basic Information

Catalog Number:

CL647-65620

Size:

100 tests, 5 µl/test

Source:

Mouse

Isotype:

IgG2a

GenBank Accession Number:

BC156627

GeneID (NCBI):

3559

Full Name:

interleukin 2 receptor, alpha

Calculated MW:

272 aa, 31 kDa

Purification Method:

Protein A purification

CloneNo.:

BC96

Excitation/Emission maxima wavelengths:

654 nm / 674 nm

Applications

Tested Applications:

FC

Species Specificity:

human

Background Information

Proliferation of T lymphocytes is triggered by the interaction of IL-2 with its specific receptor following T lymphocyte activation. The receptor for IL-2 has three forms, generated by different combinations of three different proteins, the alpha chain (IL-2R alpha), the beta chain (IL-2R beta), and the gamma chain (IL-2R gamma) (PMID: 8476561). IL-2R alpha (also known as CD25) is a type I transmembrane protein present on activated T cells, activated B cells, some thymocytes, myeloid precursors, and oligodendrocytes. CD25 is also found on natural CD4⁺Foxp3⁺ Treg cells and a subset of human CD4⁺ memory T cells (PMID: 22585674).

Storage

Storage:

Store at 2-8°C. Avoid exposure to light. Stable for one year after shipment.

Storage Buffer:

PBS with 0.09% sodium azide and 0.5% BSA, pH7.3

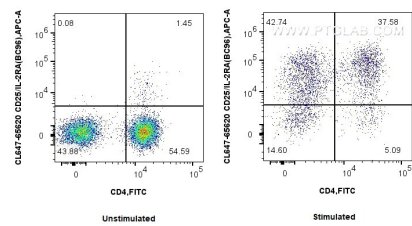
For technical support and original validation data for this product please contact:

T: 1 (888) 4PTGLAB (1-888-478-4522) (toll free in USA), or 1(312) 455-8498 (outside USA)

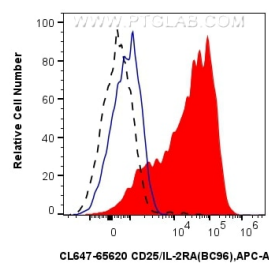
E: proteintech@ptglab.com
W: ptglab.com

This product is exclusively available under Proteintech Group brand and is not available to purchase from any other manufacturer.

Selected Validation Data



1x10⁶ untreated or PHA-treated human PBMCs were surface stained with CoraLite® Plus 488 Anti-Human CD4 and 5 ul CoraLite® Plus 647 Anti-Human CD25/IL-2RA (BC96) Mouse IgG2a RecAb (CL647-65620, Clone: BC96). Cells were not fixed.



1x10⁶ PHA-treated human PBMCs were surface stained with 5 ul CoraLite® Plus 647 Anti-Human CD25/IL-2RA (BC96) Mouse IgG2a RecAb (CL647-65620, Clone: BC96) (red) or CoraLite® Plus 647 Mouse IgG2a Isotype Control (C1.18.4) (CL647-65208, Clone: C1.18.4) (blue). 1x10⁶ untreated human PBMCs were surface stained with 5 ul CoraLite® Plus 647 Anti-Human CD25/IL-2RA (BC96) Mouse IgG2a RecAb (CL647-65620, Clone: BC96) (black, dashed). Cells

