

For Research Use Only

CoraLite® Plus 647 Anti-Mouse NKp46/NCR1 (29A1.4) Rat Recombinant Antibody

Catalog Number: CL647-65667



Basic Information

Catalog Number:

CL647-65667

Size:

100ug, 500 ug/ml

Source:

Rat

Isotype:

IgG2a

GenBank Accession Number:

BC042788

GeneID (NCBI):

17086

UNIPROT ID:

Q8C567

Full Name:

natural cytotoxicity triggering receptor 1

Purification Method:

Protein A purification

CloneNo.:

29A1.4

Recommended Dilutions:

FC: 0.25 ug per 10⁶ cells in a 100 µl suspension

Excitation/Emission maxima wavelengths:

654 nm / 674 nm

Applications

Tested Applications:

FC

Species Specificity:

mouse

Positive Controls:

FC : mouse splenocytes,

Background Information

NKp46, also known as NCR1 or CD335, is an Ig-like superfamily cell surface receptor that is highly conserved in mammals (PMID: 22021440). NKp46 is a type I transmembrane glycoprotein consisting of two extracellular Ig-like domains, a transmembrane domain, and an intracellular tail (PMID: 9730896). It is expressed on NK cells, rare T-cell subsets and a mucosal population of NKp46+ innate lymphoid cells (PMID: 9730896; 22021440). NKp46 is the major triggering receptor involved in the natural cytotoxicity (PMID: 10359120; 10092106; 15356098).

Storage

Storage:

Store at 2-8°C. Avoid exposure to light. Stable for one year after shipment.

Storage Buffer:

PBS with 0.09% sodium azide, pH7.3

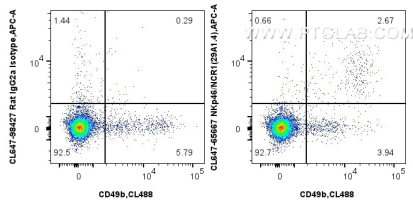
For technical support and original validation data for this product please contact:

T: 1 (888) 4PTGLAB (1-888-478-4522) (toll free in USA), or 1(312) 455-8498 (outside USA)

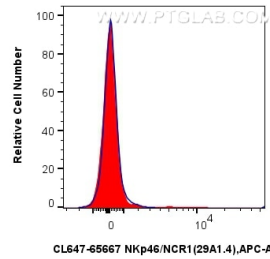
E: proteintech@ptglab.com
W: ptglab.com

This product is exclusively available under Proteintech Group brand and is not available to purchase from any other manufacturer.

Selected Validation Data



1x10⁶ mouse splenocytes were surface stained with CoraLite® Plus 488 Anti-Mouse CD49b, and 0.25 ug CoraLite® Plus 647 Anti-Mouse Nkp46/NCR1 (29A1.4) Rat IgG2a RecAb (CL647-65667, Clone: 29A1.4) or CoraLite® Plus 647 Rat IgG2a Isotype Control Recombinant Antibody (CL647-98427, Clone: 250862A1). Cells were not fixed.



1x10⁶ mouse splenocytes were surface stained with 0.25 ug CoraLite® Plus 647 Anti-Mouse Nkp46/NCR1 (29A1.4) Rat IgG2a RecAb (CL647-65667, Clone: 29A1.4) (red) or CoraLite® Plus 647 Rat IgG2a Isotype Control Recombinant Antibody (CL647-98427, Clone: 250862A1) (blue). Cells were not fixed.