

For Research Use Only

CoraLite® Plus 647 Anti-Mouse KLRG1 (2F1) Armenian Hamster Recombinant Antibody

Catalog Number: CL647-65682



Basic Information

Catalog Number:

CL647-65682

Size:

100ug, 500 ug/ml

Source:

Armenian Hamster

Isotype:

IgG2a

GenBank Accession Number:

BC101953

GeneID (NCBI):

50928

UNIPROT ID:

O88713

Full Name:

killer cell lectin-like receptor subfamily G, member 1

Purification Method:

Protein A purification

CloneNo.:

2F1

Recommended Dilutions:

FC: 0.25 ug per 10⁶ cells in a 100 µl suspension

Excitation/Emission maxima wavelengths:

654 nm / 674 nm

Applications

Tested Applications:

FC

Species Specificity:

mouse

Positive Controls:

FC : mouse splenocytes, human PBMCs

Background Information

KLRG1 (killer cell lectin-like receptor subfamily G, member 1) is a C-type lectin inhibitory receptor that contains an immunoreceptor tyrosine-based inhibitory motif (ITIM) in its cytoplasmic domain. KLRG1 is expressed by subsets of NK and T cells, existing both as a monomer and as a disulfide-linked homodimer (PMID: 10741410; 19604491). It is considered to be a cell differentiation marker for NK and T cells and is strongly induced by viral and other infections (PMID: 20373518). Through interactions with members of the cadherin family, KLRG1 plays an inhibitory role on NK- and T-cell function (PMID: 19009530; 20373518).

Storage

Storage:

Store at 2-8°C. Avoid exposure to light. Stable for one year after shipment.

Storage Buffer:

PBS with 0.09% sodium azide, pH7.3

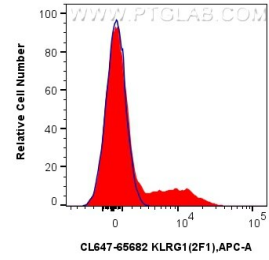
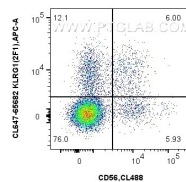
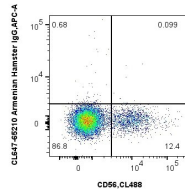
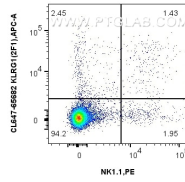
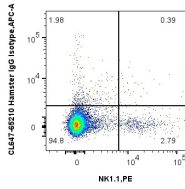
For technical support and original validation data for this product please contact:

T: 1 (888) 4PTGLAB (1-888-478-4522) (toll free in USA), or 1(312) 455-8498 (outside USA)

E: proteintech@ptglab.com
W: ptglab.com

This product is exclusively available under Proteintech Group brand and is not available to purchase from any other manufacturer.

Selected Validation Data



1x10⁶ mouse splenocytes were surface stained with PE Anti-Mouse NK1.1, and 0.25 ug CoraLite® Plus 647 Anti-Mouse KLRG1 (2F1) Armenian Hamster RecAb (CL647-65682, Clone: 2F1) or CoraLite® Plus 647 Armenian Hamster IgG Isotype Control (PIP) (CL647-65210, Clone: PIP). Cells were not fixed.

1x10⁶ human PBMCs were surface stained with CoraLite® Plus 488 Anti-Human NCAM1/CD56, and 5 ul CoraLite® Plus 647 Anti-Mouse KLRG1 (2F1) Armenian Hamster RecAb (CL647-65682, Clone: 2F1) or CoraLite® Plus 647 Armenian Hamster IgG Isotype Control (PIP) (CL647-65210, Clone: PIP). Cells were not fixed. Lymphocytes were gated.

1x10⁶ human PBMCs were surface stained with 5 ul CoraLite® Plus 647 Anti-Mouse KLRG1 (2F1) Armenian Hamster RecAb (CL647-65682, Clone: 2F1) (red) or CoraLite® Plus 647 Armenian Hamster IgG Isotype Control (PIP) (CL647-65210, Clone: PIP) (blue). Cells were not fixed. Lymphocytes were gated.

