

For Research Use Only

# CoraLite®647-conjugated 6\*His, His-Tag Monoclonal antibody



Catalog Number: **CL647-66005**

## Basic Information

Catalog Number:

CL647-66005

Size:

100ul , Concentration: 2454 µg/ml by  
Nanodrop;

Source:

Mouse

Isotype:

IgG1

GenBank Accession Number:

GeneID (NCBI):

Full Name:

Calculated MW:

1 kDa

Purification Method:

Protein G purification

CloneNo.:

1B7G5

Recommended Dilutions:

IF 1:250-1:1000

Excitation/Emission maxima  
wavelengths:

650 nm/665 nm

## Applications

Tested Applications:

FC (Intra), IF

Species Specificity:

recombinant protein

Positive Controls:

IF : Transfected HEK-293 cells,

## Background Information

Protein tags are protein or peptide sequences located either on the C- or N- terminal of the target protein, which facilitates one or several of the following characteristics: solubility, detection, purification, localization and expression. His-tag is often used for affinity purification and binding assays. Expressed His-tagged proteins can be purified and detected easily because the string of histidine residues binds to several types of immobilized metal ions, including nickel, cobalt and copper, under specific buffer conditions. The His-tag antibody is a useful tool for monitoring of the His-tagged proteins, and recognizes His-tags placed at N-terminal, C-terminal, and internal regions of fusion proteins expressed in bacteria, insect, and mammalian cells.

## Storage

Storage:

Store at -20°C. Avoid exposure to light.

Storage Buffer:

PBS with 50% Glycerol, 0.05% Proclin300, 0.5% BSA, pH 7.3.

Aliquoting is unnecessary for -20°C storage

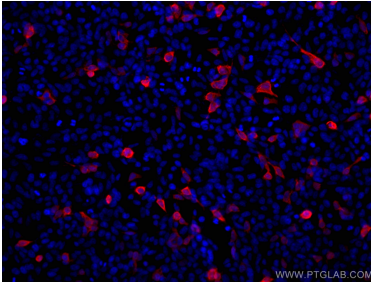
For technical support and original validation data for this product please contact:

T: 1 (888) 4PTGLAB (1-888-478-4522) (toll free  
in USA), or 1(312) 455-8498 (outside USA)

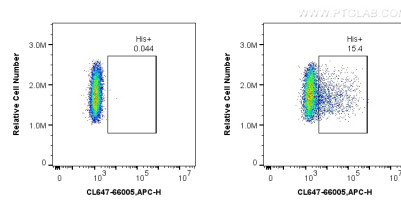
E: [proteintech@ptglab.com](mailto:proteintech@ptglab.com)  
W: [ptglab.com](http://ptglab.com)

**This product is exclusively available under Proteintech Group brand and is not available to purchase from any other manufacturer.**

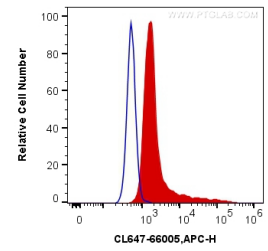
## Selected Validation Data



Immunofluorescent analysis of (-20°C Ethanol) fixed Transfected HEK-293 cells using CoraLite®647-conjugated 6<sup>\*</sup>His, His-Tag antibody (CL647-66005, Clone: 1B7G5) at dilution of 1:500.



1X10<sup>6</sup> Transfected HEK-293 cells were intracellularly stained with 0.4 ug CoraLite®647 Anti-N/A 6<sup>\*</sup>His, His-Tag (CL647-66005, Clone:1B7G5) (red), or 0.4 ug Control Antibody. Cells were fixed with 4% PFA and permeabilized with Flow Cytometry Perm Buffer (PF00011-C).



1X10<sup>6</sup> Transfected HEK-293 cells were intracellularly stained with 0.4 ug CoraLite®647 Anti-N/A 6<sup>\*</sup>His, His-Tag (CL647-66005, Clone:1B7G5) (red), or 0.4 ug Control Antibody. Cells were fixed with 4% PFA and permeabilized with Flow Cytometry Perm Buffer (PF00011-C).