

For Research Use Only

CoraLite® Plus 647-conjugated MSH6 Monoclonal antibody



Catalog Number: CL647-66172

Featured Product

Basic Information

Catalog Number: CL647-66172	GenBank Accession Number: BC004246	Purification Method: Protein A purification
Size: 100ul , Concentration: 1000 µg/ml by Nanodrop;	GeneID (NCBI): 2956	CloneNo.: 2E10B2
Source: Mouse	Full Name: mutS homolog 6 (E. coli)	Excitation/Emission maxima wavelengths: 654 nm / 674 nm
Isotype: IgG2a	Calculated MW: 153 kDa	
Immunogen Catalog Number: AG12645	Observed MW: 160 kDa	

Applications

Tested Applications:
FC (Intra)

Species Specificity:
human, mouse

Background Information

MSH6, also named as DNA mismatch repair protein Msh6 or GTMBP, is a 1360 amino acid protein, which contains one PWWP domain and belongs to the DNA mismatch repair MutS family. MSH6 localizes in the nucleus and is a component of the post-replicative DNA mismatch repair system. Msh2 and Msh6 form a protein complex required to repair mismatches generated during DNA replication.

Storage

Storage:
Store at -20°C. Avoid exposure to light. Stable for one year after shipment.

Storage Buffer:
PBS with 50% Glycerol, 0.05% Proclin300, 0.5% BSA, pH 7.3.

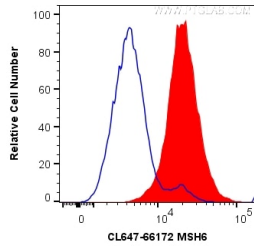
Aliquoting is unnecessary for -20°C storage

*** 20ul sizes contain 0.1% BSA

For technical support and original validation data for this product please contact:
T: 1 (888) 4PTGLAB (1-888-478-4522) (toll free in USA), or 1(312) 455-8498 (outside USA) E: proteintech@ptglab.com
W: ptglab.com

This product is exclusively available under Proteintech Group brand and is not available to purchase from any other manufacturer.

Selected Validation Data



1X10⁶ HEK-293 cells were intracellularly stained with 0.2 ug CoraLite® Plus 647 Anti-Human MSH6 (CL647-66172, Clone:2E10B2) (red), or 0.2 ug isotype control (blue). Cells were fixed and permeabilized with Transcription Factor Staining Buffer Kit (PF00011).