

CoraLite® Plus 647-conjugated Cytokeratin 18 Monoclonal antibody

Catalog Number: CL647-66187

Basic Information

| | | |
|--|--|---|
| Catalog Number: CL647-66187 | GenBank Accession Number: BC000180 | Purification Method: Protein A purification |
| Size: 100ul , Concentration: 1000 ug/ml by Nanodrop; | GeneID (NCBI): 3875 | CloneNo.: 1G11C4 |
| Source: Mouse | UNIPROT ID: P05783 | Recommended Dilutions: IF/ICC 1:50-1:500 |
| Isotype: IgG1 | Full Name: keratin 18 | Excitation/Emission maxima wavelengths: 654 nm / 674 nm |
| Immunogen Catalog Number: AG1260 | Calculated MW: 48 kDa | |
| | Observed MW: 48 kDa | |

Applications

| | |
|---|--|
| Tested Applications: IF/ICC, FC (Intra) | Positive Controls: IF/ICC : HepG2 cells, |
| Species Specificity: human, mouse, rat | |

Background Information

Keratins are a large family of proteins that form the intermediate filament cytoskeleton of epithelial cells, which are classified into two major sequence types. Type I keratins are a group of acidic intermediate filament proteins, including K9-K23, and the hair keratins Ha1-Ha8. Type II keratins are the basic or neutral counterparts to the acidic type I keratins, including K1-K8, and the hair keratins, Hb1-Hb6. KRT18, also named as CYK18, PIG46 and K18, is the most commonly found members of the intermediate filament gene family. KRT18 is a type I keratin which is found primarily in non squamous epithelia and is present in a majority of adenocarcinomas and ductal carcinomas but not in squamous cell carcinomas.

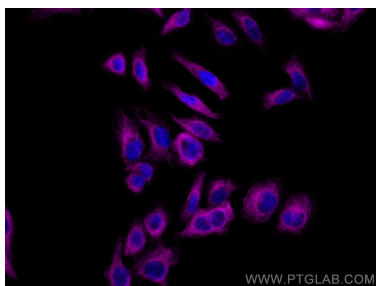
Storage

Storage:
Store at -20°C. Avoid exposure to light. Stable for one year after shipment.
Storage Buffer:
PBS with 50% Glycerol, 0.05% Proclin300, 0.5% BSA, pH 7.3.
Aliquoting is unnecessary for -20°C storage

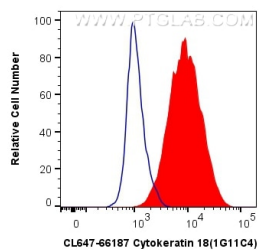
For technical support and original validation data for this product please contact:
T: 1 (888) 4PTGLAB (1-888-478-4522) (toll free in USA), or 1(312) 455-8498 (outside USA)
E: proteintech@ptglab.com
W: ptglab.com

This product is exclusively available under Proteintech Group brand and is not available to purchase from any other manufacturer.

Selected Validation Data



Immunofluorescent analysis of (-20°C Methanol) fixed HepG2 cells using CoraLite® Plus 647 Cytokeratin 18 antibody (CL647-66187, Clone: 1G11C4) at dilution of 1:200.



1X10⁶ HeLa cells were intracellularly stained with 0.8 ug CoraLite® Plus 647 Anti-Human Cytokeratin 18 (CL647-66187, Clone:1G11C4) (red), or 0.8 ug Isotype Control. Cells were fixed with 4% PFA and permeabilized with Flow Cytometry Perm Buffer (PF00011-C).