

For Research Use Only

CoraLite® Plus 647-conjugated 14-3-3 Sigma Monoclonal antibody



Catalog Number:CL647-66251

Basic Information

Catalog Number: CL647-66251	GenBank Accession Number: BC002995	Purification Method: Protein G purification
Size: 100ul , Concentration: 1000 µg/ml by Nanodrop;	GeneID (NCBI): 2810	CloneNo.: 3F10D9
Source: Mouse	Full Name: stratifin	Excitation/Emission maxima wavelengths: 654 nm / 674 nm
Isotype: IgG1	Calculated MW: 28 kDa	
Immunogen Catalog Number: AG12644	Observed MW: 28-30 kDa	

Applications

Tested Applications:
FC (Intra)

Species Specificity:
human

Background Information

14-3-3 Sigma is a member 14-3-3 family of highly conserved proteins participating in diverse cellular processes including cell cycle progression. It is exclusively present in various epithelial cells, and alternatively named as human epithelial marker (HEM), or stratifin. Alteration of its expression has been linked to cancer.

Storage

Storage:
Store at -20°C. Avoid exposure to light. Stable for one year after shipment.

Storage Buffer:
PBS with 50% Glycerol, 0.05% Proclin300, 0.5% BSA, pH 7.3.

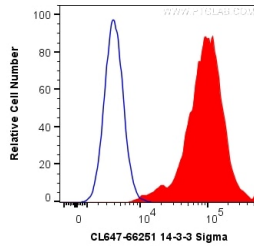
Aliquoting is unnecessary for -20°C storage

*** 20ul sizes contain 0.1% BSA

For technical support and original validation data for this product please contact:
T: 1 (888) 4PTGLAB (1-888-478-4522) (toll free in USA), or 1(312) 455-8498 (outside USA) E: proteintech@ptglab.com
W: ptglab.com

This product is exclusively available under Proteintech Group brand and is not available to purchase from any other manufacturer.

Selected Validation Data



1X10⁶ HeLa cells were intracellularly stained with 0.2 ug CoralLite® Plus 647 Anti-Human 14-3-3 Sigma (CL647-66251, Clone:3F10D9) (red), or 0.2 ug APC Mouse IgG2b Isotype Control (APC-65128, Clone: MPC-11) (blue). Cells were fixed with 4% PFA and permeabilized with Flow Cytometry Perm Buffer (PF00011-C).