

For Research Use Only

CoraLite®647-conjugated Fascin Monoclonal antibody



Catalog Number:CL647-66321

Basic Information

Catalog Number: CL647-66321	GenBank Accession Number: BC000521	Purification Method: Protein A purification
Size: 100ul , Concentration: 1000 µg/ml by Nanodrop;	GeneID (NCBI): 6624	CloneNo.: 1B5G3
Source: Mouse	Full Name: fascin homolog 1, actin-bundling protein (Strongylocentrotus purpuratus)	Excitation/Emission maxima wavelengths: 650 nm/665 nm
Isotype: IgG2a	Calculated MW: 55 kDa	
Immunogen Catalog Number: AG6074	Observed MW: 55 kDa	

Applications

Tested Applications:
FC (Intra)

Species Specificity:
human

Background Information

Fascin is a highly conserved and ubiquitous actin cross-linking protein that has a major function in cell motility and adhesion. Fascin localizes to a number of highly dynamic cellular structures that require strong mechanical support which include stress fibers and cellular protrusions such as microvilli, microspikes and lamellipodia. Fascin is up-regulated in many human carcinomas. It's a marker for Reed-Sternberg cells in Hodgkin's disease; it is also a highly selective marker for dendritic cells of lymphoid tissues.

Storage

Storage:
Store at -20°C. Avoid exposure to light.

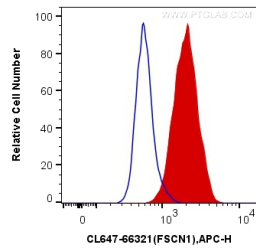
Storage Buffer:
PBS with 50% Glycerol, 0.05% Proclin300, 0.5% BSA, pH 7.3.

Aliquoting is unnecessary for -20°C storage

For technical support and original validation data for this product please contact:
T: 1 (888) 4PTGLAB (1-888-478-4522) (toll free in USA), or 1(312) 455-8498 (outside USA) E: proteintech@ptglab.com
W: ptglab.com

This product is exclusively available under Proteintech Group brand and is not available to purchase from any other manufacturer.

Selected Validation Data



1X10⁶ HeLa cells were intracellularly stained with 0.4 ug Coralite®647 Anti-Human Fascin (CL647-66321, Clone:1B5G3) (red), or 0.4 ug Control Antibody. Cells were fixed with 4% PFA and permeabilized with Flow Cytometry Perm Buffer (PF00011-C).