

For Research Use Only

CoraLite® Plus 647-conjugated BCL6 Monoclonal antibody



Catalog Number:CL647-66340

Basic Information

Catalog Number: CL647-66340	GenBank Accession Number: BC150184	Purification Method: Protein G purification
Size: 100ul , Concentration: 1000 µg/ml by Nanodrop;	GeneID (NCBI): 604	CloneNo.: 1E6B1
Source: Mouse	UNIPROT ID: P41182	Excitation/Emission maxima wavelengths: 654 nm / 674 nm
Isotype: IgG1	Full Name: B-cell CLL/lymphoma 6	
Immunogen Catalog Number: AG15519	Calculated MW: 706 aa, 79 kDa	
	Observed MW: 85 kDa	

Applications

Tested Applications:
FC (Intra)

Species Specificity:
human

Background Information

BCL6, a zinc finger transcription factor, contains a N-terminal BTB/POZ domain and C-terminal zinc finger DNA-binding motifs and represses transcription of a wide range of target proteins and microRNAs. BCL6 protein has been reported as a master regulator of B lymphocyte development and growth, and altered BCL6 protein expression was implicated in pathogenesis of diverse human hematologic malignancies, especially in the diffuse large B cell lymphoma (DLBCL). BCL6 is required for the development of T follicular helper T cells (TFH), a helper T cell subset required for the formation of mature and productive GCs. BCL6 has also been shown to play important regulatory roles in macrophages. This antibody only recognize human species.

Storage

Storage:
Store at -20°C. Avoid exposure to light. Stable for one year after shipment.

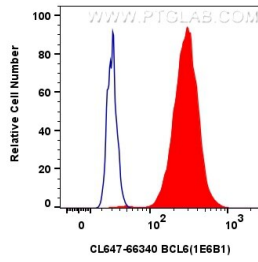
Storage Buffer:
PBS with 50% Glycerol, 0.05% Proclin300, 0.5% BSA, pH 7.3.

Aliquoting is unnecessary for -20°C storage

For technical support and original validation data for this product please contact:
T: 1 (888) 4PTGLAB (1-888-478-4522) (toll free in USA), or 1(312) 455-8498 (outside USA)
E: proteintech@ptglab.com
W: ptglab.com

This product is exclusively available under Proteintech Group brand and is not available to purchase from any other manufacturer.

Selected Validation Data



1x10⁶ Ramos cells were intracellularly stained with 0.8 ug CoraLite® Plus 647-conjugated BCL6 Monoclonal antibody (CL647-66340, Clone:1E6B1) (red), or 0.8 ug CoraLite® Plus 647 Mouse IgG1 Isotype Control (MOPC-21) (CL647-65124, Clone: MOPC-21) (blue). Cells were fixed and permeabilized with Transcription Factor Staining Buffer Kit (PF00011).