

For Research Use Only

CoraLite® Plus 647 Mouse IgG1 Isotype Control (1F8D3)



Catalog Number: CL647-66360-1

Basic Information

Catalog Number:

CL647-66360-1

GenBank Accession Number:

GeneID (NCBI):

Size:

100ug, Concentration: 200 µg/ml by
Nanodrop;

Full Name:

Purification Method:

Protein G purification

CloneNo.:

1F8D3

Source:

Mouse

Isotype:

IgG1

Applications

Tested Applications:

FC

Species Specificity:

Megathura crenulata

Background Information

This antibody is used as the isotype control of mouse IgG1 (Kappa). It can be used as the isotype control in Flow Cytometry, Immuno-Precipitation and other experiments. The immunogen of this antibody is Keyhole Limpet Hemocyanin (KLH).

Storage

Storage:

Store at 2-8°C. Avoid exposure to light. Stable for one year after shipment.

Storage Buffer:

PBS with 0.09% sodium azide and 0.5% BSA.

*** 20ul sizes contain 0.1% BSA

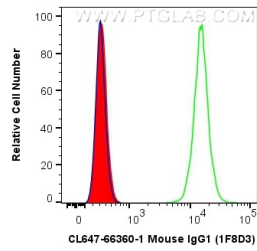
For technical support and original validation data for this product please contact:

T: 1 (888) 4PTGLAB (1-888-478-4522) (toll free
in USA), or 1(312) 455-8498 (outside USA)

E: proteintech@ptglab.com
W: ptglab.com

This product is exclusively available under Proteintech Group brand and is not available to purchase from any other manufacturer.

Selected Validation Data



1X10⁶ HepG2 cells were intracellularly stained with 0.2 ug CoraLite® Plus 647 Anti-Mouse IgG1 isotype control (CL647-66360-1, Clone:1F8D3) (red), or 0.2 ug CoraLite® Plus 647 Lamin B1 antibody (CL647-66095, Clone: 3C10G12) (green), or unstained (blue). Cells were fixed and permeabilized with Transcription Factor Staining Buffer Kit (PF00011).