

For Research Use Only

CoraLite® Plus 647 Mouse IgG2a isotype control (11A1B2)



Catalog Number: CL647-66360-2

Basic Information

Catalog Number:

CL647-66360-2

GenBank Accession Number:

GeneID (NCBI):

Size:

100ug, Concentration: 200 µg/ml by Nanodrop;

Full Name:

Source:

Mouse

Isotype:

IgG2a

Purification Method:

Protein A purification

CloneNo.:

11A1B2

Excitation/Emission maxima wavelengths:

654 nm / 674 nm

Applications

Tested Applications:

FC

Species Specificity:

Megathura crenulata

Background Information

This antibody is used as the isotype control of mouse IgG2a. It can be used as the isotype control in Flow Cytometry and other experiments. The immunogen of this antibody is Keyhole Limpet Hemocyanin (KLH).

0.05-0.2 ug per test is suggested for FC experiment.

Storage

Storage:

Store at 2-8°C. Avoid exposure to light. Stable for one year after shipment.

Storage Buffer:

PBS with 0.09% sodium azide and 0.5% BSA.

*** 20ul sizes contain 0.1% BSA

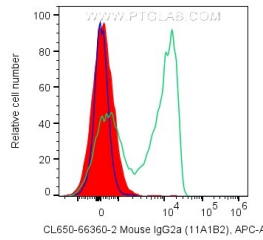
For technical support and original validation data for this product please contact:

T: 1 (888) 4PTGLAB (1-888-478-4522) (toll free in USA), or 1(312) 455-8498 (outside USA)

E: proteintech@ptglab.com
W: ptglab.com

This product is exclusively available under Proteintech Group brand and is not available to purchase from any other manufacturer.

Selected Validation Data



1X10⁶ human PBMCs were surface stained with 0.2 ug CoraLite® Plus 647 Mouse IgG2a isotype control (CL647-66360-2, Clone: 11A1B2) (filled red), 5 ul CoraLite® Plus 647 Anti-Human CD5 (green), or unstained (blue). Cells were not fixed. Lymphocytes were gated.