

For Research Use Only

# CoraLite® Plus 647-conjugated Mouse IgG1 isotype control Monoclonal antibody



Catalog Number:CL647-66360

## Basic Information

<b>Catalog Number:</b> CL647-66360	<b>GenBank Accession Number:</b> GeneID (NCBI):	<b>Purification Method:</b> Protein G purification
<b>Size:</b> 100ul , Concentration: 2000 µg/ml by Nanodrop;	<b>Full Name:</b>	<b>CloneNo.:</b> 1F8D3
<b>Source:</b> Mouse		<b>Excitation/Emission maxima wavelengths:</b> 650 nm / 665 nm
<b>Isotype:</b> IgG1		

## Applications

**Tested Applications:**  
FC

**Species Specificity:**  
Megathura crenulata

## Background Information

This antibody is used as the isotype control of mouse IgG1 (Kappa). It can be used as the isotype control in Flow Cytometry and other experiments. The immunogen of this antibody is Keyhole Limpet Hemocyanin (KLH).

0.05-0.2 ug per test is suggested for FC experiment.

## Storage

**Storage:**  
Store at -20°C. Avoid exposure to light. Stable for one year after shipment.

**Storage Buffer:**  
PBS with 50% Glycerol, 0.05% Proclin300, 0.5% BSA, pH 7.3.

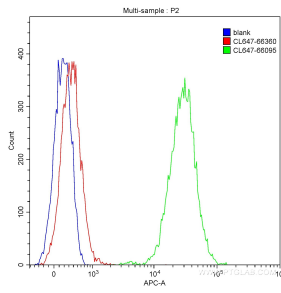
Aliquoting is unnecessary for -20°C storage

**\*\*\* 20ul sizes contain 0.1% BSA**

For technical support and original validation data for this product please contact:  
T: 1 (888) 4PTGLAB (1-888-478-4522) (toll free in USA), or 1(312) 455-8498 (outside USA) E: proteintech@ptglab.com W: ptglab.com

This product is exclusively available under Proteintech Group brand and is not available to purchase from any other manufacturer.

## Selected Validation Data



1X10<sup>6</sup> HepG2 cells were stained with 0.20 ug CoraLite® Plus 647-conjugated mouse IgG1 isotype control (CL647-66360, Clone:1F8D3) (red) or 0.20 ug CoraLite® Plus 647-conjugated Lamin B1 antibody (CL647-66095) (green), or not stained (blank) (blue). Cells were fixed with 90% MeOH.