

For Research Use Only

# CoraLite® Plus 647-conjugated Heavy chain of Rabbit IgG Monoclonal antibody

Catalog Number: **CL647-66467**



## Basic Information

Catalog Number:

CL647-66467

GenBank Accession Number:

GeneID (NCBI):

Size:

100ul , Concentration: 1000 ug/ml by Nanodrop;

UNIPROT ID:

N/A

Source:

Mouse

Full Name:

Isotype:

IgG1

Purification Method:

Protein G purification

CloneNo.:

1C9A5

Recommended Dilutions:

IF/ICC 1:200-1:800

Excitation/Emission maxima wavelengths:

654 nm / 674 nm

## Applications

Tested Applications:

IF/ICC, FC (Intra)

Species Specificity:

rabbit

Positive Controls:

IF/ICC : HeLa cells,

## Background Information

This antibody specifically recognizes the heavy chain of Rabbit IgG.

## Storage

Storage:

Store at -20°C. Avoid exposure to light. Stable for one year after shipment.

Storage Buffer:

PBS with 50% Glycerol, 0.05% Proclin300, 0.5% BSA, pH 7.3.

Aliquoting is unnecessary for -20°C storage

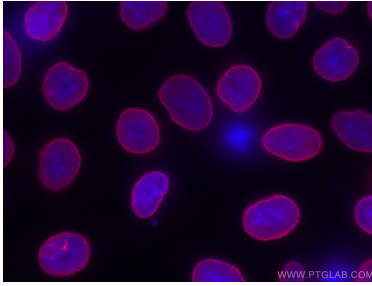
For technical support and original validation data for this product please contact:

T: 1 (888) 4PTGLAB (1-888-478-4522) (toll free in USA), or 1(312) 455-8498 (outside USA)

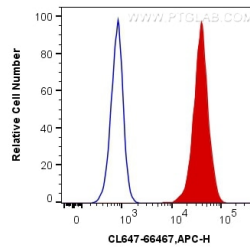
E: [proteintech@ptglab.com](mailto:proteintech@ptglab.com)  
W: [ptglab.com](http://ptglab.com)

This product is exclusively available under Proteintech Group brand and is not available to purchase from any other manufacturer.

## Selected Validation Data



Immunofluorescent analysis of (-20°C Ethanol) fixed HeLa cells using the CoraLite® Plus 647-conjugated version of this antibody, CL647-66467 (Heavy chain of Rabbit IgG antibody), at dilution of 1:200.



1X10<sup>6</sup> HeLa cells were intracellularly stained with Beta Catenin Polyclonal antibody (51067-2-AP) and 0.4 ug CoraLite® Plus 647 Anti-Rabbit Heavy chain of Rabbit IgG (CL647-66467, Clone:1C9A5) (red), or Control Antibody and 0.4 ug CoraLite® Plus 647 Anti-Rabbit Heavy chain of Rabbit IgG (CL647-66467, Clone:1C9A5). Cells were fixed with 4% PFA and permeabilized with Flow Cytometry Perm Buffer (PF00011-C).