

For Research Use Only

# CoraLite® Plus 647-conjugated SOD2 Monoclonal antibody



Catalog Number: **CL647-66474**

## Basic Information

<b>Catalog Number:</b> CL647-66474	<b>GenBank Accession Number:</b> BC016934	<b>Purification Method:</b> Protein A purification
<b>Size:</b> 100ul , Concentration: 1000 µg/ml by Nanodrop;	<b>GeneID (NCBI):</b> 6648	<b>CloneNo.:</b> 3A6C2
<b>Source:</b> Mouse	<b>Full Name:</b> superoxide dismutase 2, mitochondrial	<b>Excitation/Emission maxima wavelengths:</b> 650 nm / 665 nm
<b>Isotype:</b> IgG2a	<b>Calculated MW:</b> 25 kDa	
<b>Immunogen Catalog Number:</b> AG21388	<b>Observed MW:</b> 25 kDa	

## Applications

**Tested Applications:**  
FC (Intra)

**Species Specificity:**  
Human, mouse, rat, pig

## Background Information

SOD2(superoxide dismutase 2, mitochondrial ) is also named as IPOB, MNSOD, SODM, Mn-SOD and belongs to the iron/manganese superoxide dismutase family. It is a marker of mitochondria, which is restricted to the perinuclear area in a cell with aggregate formation of mutant SOD1(PMID:12659845). It functions as the first line of antioxidant defense against highly reactive superoxide radicals and it appears to be early predictors for survival in septic patients with MIF(PMID:20863520). It has 2 isoforms with the molecular weight of 25 kDa and 21 kDa.

## Storage

**Storage:**  
Store at -20°C. Avoid exposure to light.

**Storage Buffer:**  
PBS with 50% Glycerol, 0.05% Proclin300, 0.5% BSA, pH 7.3.

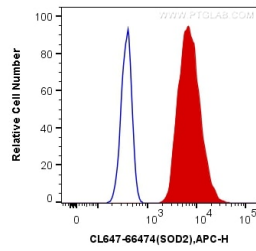
Aliquoting is unnecessary for -20°C storage

\*\*\* 20ul sizes contain 0.1% BSA

For technical support and original validation data for this product please contact:  
T: 1 (888) 4PTGLAB (1-888-478-4522) (toll free in USA), or 1(312) 455-8498 (outside USA)  
E: [proteintech@ptglab.com](mailto:proteintech@ptglab.com)  
W: [ptglab.com](http://ptglab.com)

This product is exclusively available under Proteintech Group brand and is not available to purchase from any other manufacturer.

## Selected Validation Data



1X10<sup>6</sup> HeLa cells were intracellularly stained with 0.4 ug Coralite® Plus 647 Anti-Human SOD2 (CL647-66474, Clone:3A6C2) (red), or 0.4 ug Control Antibody. Cells were fixed with 4% PFA and permeabilized with Flow Cytometry Perm Buffer (PF00011-C).