

For Research Use Only

CoraLite® Plus 647-conjugated S100A4 Monoclonal antibody

Catalog Number: CL647-66489

Featured Product



Basic Information

Catalog Number:

CL647-66489

Size:

100ul , Concentration: 1000 ug/ml by Nanodrop;

Source:

Mouse

Isotype:

IgG2a

Immunogen Catalog Number:

AG9019

GenBank Accession Number:

BC016300

GeneID (NCBI):

6275

ENSEMBL Gene ID:

ENSG00000196154

UNIPROT ID:

P26447

Full Name:

S100 calcium binding protein A4

Calculated MW:

101 aa, 12 kDa

Observed MW:

12 kDa

Purification Method:

Protein A purification

CloneNo.:

2G11B4

Recommended Dilutions:

IF/ICC 1:50-1:500

Excitation/Emission maxima wavelengths:

654 nm / 674 nm

Applications

Tested Applications:

IF/ICC, FC (Intra)

Species Specificity:

human, mouse

Positive Controls:

IF/ICC : HeLa cells,

Background Information

S100A4 is a member of the S100 family of calcium-binding proteins. The S100 family members have been involved in the regulation of a number of cellular processes such as cell cycle progression and differentiation. S100A4 is known to localize to and function in the nucleus, cytoplasm of cells, and the extracellular space. S100A4 has also been shown to be associated with tumor growth, motility, invasion, metastasis, angiogenesis, apoptosis, and chemoresistance. It is a fibroblast-specific protein associated with mesenchymal cell morphology and motility, is expressed during epithelial-mesenchymal transformations (EMT) in vivo (PMID: 9362334). It is a specific prognostic marker for renal survival in patients with IgAN (PMID: 16105038). It is also an improved marker for lung fibroblasts that could be useful for investigating the pathogenesis of pulmonary fibrosis (PMID: 15618458). Overexpression of S100A4 is correlated with a worse prognosis in patients with various types of cancer.

Storage

Storage:

Store at -20°C. Avoid exposure to light. Stable for one year after shipment.

Storage Buffer:

PBS with 50% Glycerol, 0.05% Proclin300, 0.5% BSA, pH 7.3.

Aliquoting is unnecessary for -20°C storage

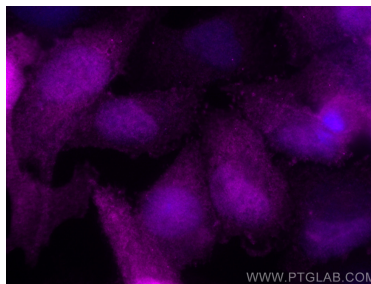
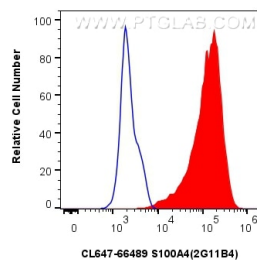
For technical support and original validation data for this product please contact:

T: 1 (888) 4PTGLAB (1-888-478-4522) (toll free in USA), or 1(312) 455-8498 (outside USA)

E: proteintech@ptglab.com
W: ptglab.com

This product is exclusively available under Proteintech Group brand and is not available to purchase from any other manufacturer.

Selected Validation Data



1×10^6 HeLa cells were intracellularly stained with 0.4 μ g CoraLite® Plus 647-conjugated S100A4 Monoclonal antibody (CL647-66489, Clone: 2G11B4) (red), or 0.4 μ g CoraLite® Plus 647 Mouse IgG2a isotype control (11A1B2) (CL647-66360-2, Clone: 11A1B2) (blue). Cells were fixed with 4% PFA and permeabilized with Flow Cytometry Perm Buffer (PF00011-C).

Immunofluorescent analysis of (4% PFA) fixed HeLa cells using CoraLite® Plus 647 S100A4 antibody (CL647-66489, Clone: 2G11B4) at dilution of 1:200.