

For Research Use Only

# CoraLite® Plus 647-conjugated FYN Monoclonal antibody

Catalog Number: CL647-66606

Featured Product



## Basic Information

### Catalog Number:

CL647-66606

### Size:

100ul , Concentration: 1000 µg/ml by Nanodrop;

### Source:

Mouse

### Isotype:

IgG1

### Immunogen Catalog Number:

AG11127

### GenBank Accession Number:

BC032496

### GeneID (NCBI):

2534

### UNIPROT ID:

P06241

### Full Name:

FYN oncogene related to SRC, FGR, YES

### Calculated MW:

537aa,61 kDa; 482aa,55 kDa

### Observed MW:

60 kDa

### Purification Method:

Protein G purification

### CloneNo.:

1G4B1

### Excitation/Emission maxima wavelengths:

654 nm / 674 nm

## Applications

### Tested Applications:

FC (Intra)

### Species Specificity:

human, mouse, rat

## Background Information

FYN, also named as p59-Fyn and SLK, belongs to the protein kinase superfamily, Tyr protein kinase family and SRC subfamily. FYN is implicated in the control of cell growth. It plays a role in the regulation of intracellular calcium levels, with isoform 2 showing the greater ability to mobilize cytoplasmic calcium in comparison to isoform 1. FYN is required in brain development and mature brain function with important roles in the regulation of axon growth, axon guidance, and neurite extension. FYN blocks axon outgrowth and attraction induced by NTN1 by phosphorylating its receptor DDC.

## Storage

### Storage:

Store at -20°C. Avoid exposure to light. Stable for one year after shipment.

### Storage Buffer:

PBS with 50% Glycerol, 0.05% Proclin300, 0.5% BSA, pH 7.3.

Aliquoting is unnecessary for -20°C storage

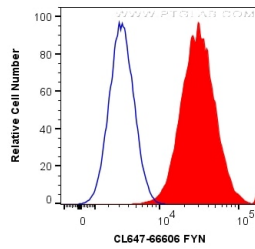
For technical support and original validation data for this product please contact:

T: 1 (888) 4PTGLAB (1-888-478-4522) (toll free in USA), or 1(312) 455-8498 (outside USA)

E: [proteintech@ptglab.com](mailto:proteintech@ptglab.com)  
W: [ptglab.com](http://ptglab.com)

This product is exclusively available under Proteintech Group brand and is not available to purchase from any other manufacturer.

## Selected Validation Data



$1 \times 10^6$  HeLa cells were intracellularly stained with 0.2  $\mu$ g CoraLite® Plus 647 Anti-Human FYN (CL647-66606, Clone:1G4B1) (red), or 0.2  $\mu$ g Isotype Control (blue). Cells were fixed with 4% PFA and permeabilized with Flow Cytometry Perm Buffer (PF00011-C).