

For Research Use Only

# CoraLite® Plus 647-conjugated GOLGA2/GM130 Monoclonal antibody

Catalog Number: CL647-66662

Featured Product



## Basic Information

**Catalog Number:**

CL647-66662

**Size:**

100ul , Concentration: 1000ug/ml by  
Nanodrop;

**Source:**

Mouse

**Isotype:**

IgG1

**Immunogen Catalog Number:**

AG1848

**GenBank Accession Number:**

BC014188

**GeneID (NCBI):**

2801

**UNIPROT ID:**

Q08379

**Full Name:**

golgi autoantigen, golgin subfamily  
a, 2

**Calculated MW:**

111 kDa

**Observed MW:**

130 kDa

**Purification Method:**

Protein G purification

**CloneNo.:**

2A4F11

**Recommended Dilutions:**

IF/ICC: 1:50-1:500

**Excitation/Emission maxima**

**wavelengths:**  
654 nm / 674 nm

## Applications

**Tested Applications:**

**Species Specificity:**

human, rat

**Positive Controls:**

IF/ICC : C2C12 cells,

## Background Information

GOLGA2, also known as GM130, is a 130 kDa cis-Golgi matrix protein which is one component of the detergent and salt resistant Golgi matrix. It is a peripheral membrane protein highly bound to Golgi membrane and localized mainly at the cytoplasmic face of cis-Golgi membrane. Together with its interacting partner proteins, including p115, giantin, GRASP65, and Rab GTPase, GOLGA2/GM130 is involved in the regulation of ER-to-Golgi transport and also in the maintenance of the Golgi structure. Emerging evidence suggest that the GOLGA2/GM130 has potential roles in the control of glycosylation, cell cycle progression, and higher order cell functions such as cell polarization and directed cell migration. (PMID: 20197635)

## Storage

**Storage:**

Store at -20°C. Avoid exposure to light. Stable for one year after shipment.

**Storage Buffer:**

PBS with 50% glycerol, 0.05% Proclin300, 0.5% BSA, pH7.3

Aliquoting is unnecessary for -20°C storage

For technical support and original validation data for this product please contact:

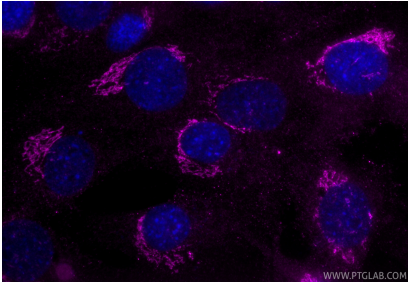
T: 1 (888) 4PTGLAB (1-888-478-4522) (toll free  
in USA), or 1(312) 455-8498 (outside USA)

E: proteintech@ptglab.com  
W: ptglab.com

**This product is exclusively available under Proteintech Group brand and is not available to purchase from any other manufacturer.**

---

## Selected Validation Data



Immunofluorescent analysis of (4% PFA) fixed C2C12 cells using Coralite® Plus 647 GOLGA2/GM130 antibody (CL647-66662, Clone: 2A4F11) at dilution of 1:200.