

For Research Use Only

CoraLite® Plus 647-conjugated EPHA7 Monoclonal antibody

Catalog Number: CL647-66667

Featured Product



Basic Information

Catalog Number:

CL647-66667

Size:

100ul , Concentration: 1000 ug/ml by Nanodrop;

Source:

Mouse

Isotype:

IgG1

Immunogen Catalog Number:

AG3813

GenBank Accession Number:

BC027940

GeneID (NCBI):

2045

UNIPROT ID:

Q15375

Full Name:

EPH receptor A7

Calculated MW:

998 aa, 112 kDa

Observed MW:

120 kDa

Purification Method:

Protein G purification

CloneNo.:

1A7E5

Recommended Dilutions:

FC (Intra): 0.4 ug per 10⁶ cells in a 100 µl suspension

Excitation/Emission maxima wavelengths:

654 nm / 674 nm

Applications

Tested Applications:

FC (Intra)

Species Specificity:

human, mouse, rat, pig

Positive Controls:

FC (Intra) : SH-SY5Y cells,

Background Information

Ephrin receptor A7 (EphA7) is a member of the Eph receptor family. EPHA7 plays a role in corticogenesis processes, determines brain size and shape, and is involved in development of the central nervous system (PMID:34176129). In addition, EphA7 also has a dual role of tumor promoter and tumor suppressor. It can participate in cell proliferation, migration and apoptosis through various mechanisms, and affect tumor differentiation, staging and prognosis. EphA7 may be a potential diagnostic marker and tumor treatment target (PMID:35112312).

Storage

Storage:

Store at -20°C. Avoid exposure to light. Stable for one year after shipment.

Storage Buffer:

PBS with 50% glycerol, 0.05% Proclin300, 0.5% BSA, pH7.3

Aliquoting is unnecessary for -20°C storage

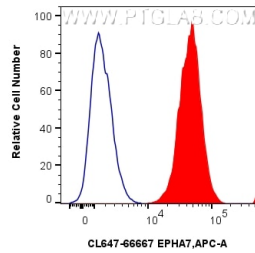
For technical support and original validation data for this product please contact:

T: 1 (888) 4PTGLAB (1-888-478-4522) (toll free in USA), or 1(312) 455-8498 (outside USA)

E: proteintech@ptglab.com
W: ptglab.com

This product is exclusively available under Proteintech Group brand and is not available to purchase from any other manufacturer.

Selected Validation Data



1x10⁶ SH-SY5Y cells were intracellularly stained with 0.4 ug Coralite® Plus 647 Epha7 Monoclonal Antibody (CL647-66667, Clone:1A7E5)(red), or 0.4 ug Coralite® Plus 647 Mouse IgG1 Isotype Control (MOPC-21) (CL647-65124, Clone: MOPC-21) (blue). Cells were fixed and permeabilized with Intracellular Flow Cytometry Fixation & Permeabilization Buffer Kit (PF00019).