

For Research Use Only

CoraLite® Plus 647-conjugated ARL13B Monoclonal antibody

Catalog Number:CL647-66739



Basic Information

Catalog Number:

CL647-66739

Size:

100ul , Concentration: 1000 ug/ml by
Nanodrop;

Source:

Mouse

Isotype:

IgG2a

Immunogen Catalog Number:

AG12031

GenBank Accession Number:

BC094725

GeneID (NCBI):

200894

UNIPROT ID:

Q3SXY8

Full Name:

ADP-ribosylation factor-like 13B

Calculated MW:

48 kDa

Observed MW:

60 kDa

Purification Method:

Protein A purification

CloneNo.:

1H6C3

Recommended Dilutions:

IF/ICC 1:50-1:500

Excitation/Emission maxima
wavelengths:

654 nm / 674 nm

Applications

Tested Applications:

IF/ICC

Species Specificity:

Human, Canine

Positive Controls:

IF/ICC : hTERT-RPE1 cells, MDCK cells

Background Information

ARL13B, also named as ARL2L1, is a small ciliary G protein of the Ras superfamily. Localized in the cilia, it is required for cilium biogenesis and sonic hedgehog signaling. Defects in ARL13B are the cause of Joubert syndrome (JS) which is an autosomal recessive disorder characterized by a distinctive cerebellar malformation (PMID: 19906870). ARL13B is predicted to be a 48 kDa protein, and the 60 kDa band is likely to represent a modified form of ARL13B. ARL13B can be used to mark the cilia (PMID:22072986).

Storage

Storage:

Store at -20°C. Avoid exposure to light. Stable for one year after shipment.

Storage Buffer:

PBS with 50% Glycerol, 0.05% Proclin300, 0.5% BSA, pH 7.3.

Aliquoting is unnecessary for -20°C storage

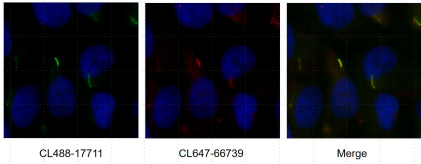
For technical support and original validation data for this product please contact:

T: 1 (888) 4PTGLAB (1-888-478-4522) (toll free
in USA), or 1(312) 455-8498 (outside USA)

E: proteintech@ptglab.com
W: ptglab.com

This product is exclusively available under Proteintech Group brand and is not available to purchase from any other manufacturer.

Selected Validation Data



Immunofluorescent analysis of (4% PFA) fixed hTERT-RPE1 cells using CoraLite® Plus 647 ARL13B antibody (CL647-66739, Clone: 1H6C3) at dilution of 1:200.