

For Research Use Only

# CoraLite® Plus 647-conjugated MFN1 Monoclonal antibody

Catalog Number: CL647-66776



## Basic Information

Catalog Number: CL647-66776	GenBank Accession Number: BC040557	Purification Method: Protein A purification
Size: 100ul , Concentration: 1000 ug/ml by Nanodrop;	GeneID (NCBI): 55669	CloneNo.: 3F11C11
Source: Mouse	UNIPROT ID: Q8IWA4	Recommended Dilutions: IF/ICC 1:50-1:500
Isotype: IgG2a	Full Name: mitofusin 1	Excitation/Emission maxima wavelengths: 654 nm / 674 nm
Immunogen Catalog Number: AG4890	Calculated MW: 741 aa, 84 kDa	
	Observed MW: 84 kDa	

## Applications

Tested Applications: IF/ICC, FC (Intra)	Positive Controls: IF/ICC : HepG2 cells,
Species Specificity: human, mouse, rat	

## Background Information

Mitofusin-1 (MFN1) is a mediator of mitochondrial fusion. This protein and mitofusin 2 are homologs of the Drosophila protein fuzzy onion (Fzo). Mitofusins are large predicted GTPases located in outer mitochondrial membrane. They are essential for outer membrane fusion by interacting with each other to facilitate mitochondrial targeting. The mitofusins are the first known protein mediator of mitochondrial fusion, and mediate developmentally regulated post-meiotic fusion of mitochondria. Mitofusin 1 and mitofusin 2 are ubiquitinated in a PINK1/parkin-dependent manner upon induction of mitophagy (PMID: 20871098).

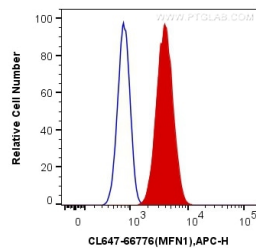
## Storage

**Storage:**  
Store at -20°C. Avoid exposure to light. Stable for one year after shipment.  
**Storage Buffer:**  
PBS with 50% Glycerol, 0.05% Proclin300, 0.5% BSA, pH 7.3.  
Aliquoting is unnecessary for -20°C storage

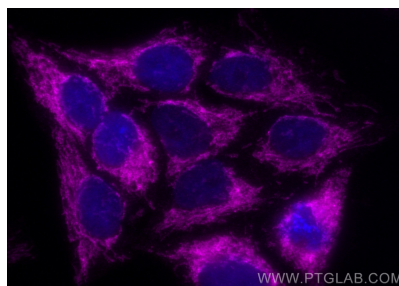
For technical support and original validation data for this product please contact:  
T: 1 (888) 4PTGLAB (1-888-478-4522) (toll free in USA), or 1(312) 455-8498 (outside USA)  
E: [proteintech@ptglab.com](mailto:proteintech@ptglab.com)  
W: [ptglab.com](http://ptglab.com)

This product is exclusively available under Proteintech Group brand and is not available to purchase from any other manufacturer.

## Selected Validation Data



1X10<sup>6</sup> HepG2 cells were intracellularly stained with 0.2 ug CoraLite® Plus 647 Anti-Human MFN1 (CL647-66776, Clone:3F11C11) (red), or 0.2 ug Control Antibody. Cells were fixed with 4% PFA and permeabilized with Flow Cytometry Perm Buffer (PF00011-C).



Immunofluorescent analysis of (4% PFA) fixed HepG2 cells using CoraLite® Plus 647 MFN1 antibody (CL647-66776, Clone: 3F11C11 ) at dilution of 1:200.