

For Research Use Only

# CoraLite® Plus 647-conjugated Bcl2 Monoclonal antibody



Catalog Number:CL647-66799

## Basic Information

<b>Catalog Number:</b> CL647-66799	<b>GenBank Accession Number:</b> NM-009741	<b>Purification Method:</b> Protein G purification
<b>Size:</b> 100ul , Concentration: 1000 µg/ml by Nanodrop;	<b>GeneID (NCBI):</b> 12043	<b>CloneNo.:</b> 1B5B9
<b>Source:</b> Mouse	<b>Full Name:</b> B-cell leukemia/lymphoma 2	<b>Excitation/Emission maxima wavelengths:</b> 654 nm / 674 nm
<b>Isotype:</b> IgG1	<b>Calculated MW:</b> 26 kDa	
<b>Immunogen Catalog Number:</b> AG24261	<b>Observed MW:</b> 26 kDa	

## Applications

**Tested Applications:**  
FC (Intra)

**Species Specificity:**  
mouse

## Background Information

Bcl2 is a member of the B cell lymphoma 2 protein family. Members of this family regulate cell death in multiple cell types and can have either proapoptotic or antiapoptotic activities. The protein encoded by this gene inhibits mitochondrial-mediated apoptosis. This protein is an integral outer mitochondrial membrane protein that functions as part of signaling pathway that controls mitochondrial permeability in response to apoptotic stimuli. This protein may also play a role in neuron cell survival and autophagy. Abnormal expression and chromosomal translocations of this gene are associated with cancer progression in numerous tissues.

## Storage

**Storage:**  
Store at -20°C. Avoid exposure to light. Stable for one year after shipment.

**Storage Buffer:**  
PBS with 50% Glycerol, 0.05% Proclin300, 0.5% BSA, pH 7.3.

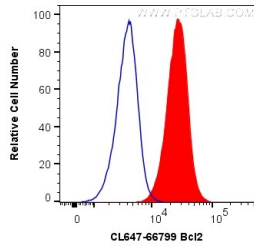
Aliquoting is unnecessary for -20°C storage

\*\*\* 20ul sizes contain 0.1% BSA

For technical support and original validation data for this product please contact:  
T: 1 (888) 4PTGLAB (1-888-478-4522) (toll free in USA), or 1(312) 455-8498 (outside USA) E: proteintech@ptglab.com W: ptglab.com

This product is exclusively available under Proteintech Group brand and is not available to purchase from any other manufacturer.

## Selected Validation Data



1X10<sup>6</sup> NIH/3T3 cells were intracellularly stained with 0.2 ug CoraLite® Plus 647 Anti-Mouse Bcl2 (CL647-66799, Clone:1B5B9) (red), or 0.2 ug APC-65128; APC Mouse IgG2b Isotype Control (APC-65128, Clone: MPC-11) (blue). Cells were fixed with 4% PFA and permeabilized with Flow Cytometry Perm Buffer (PF00011-C).