

For Research Use Only

CoraLite® Plus 647-conjugated CAPN2 Monoclonal antibody

Catalog Number:CL647-66977



Basic Information

Catalog Number:

CL647-66977

Size:

100ul , Concentration: 1000 ug/ml by Nanodrop;

Source:

Mouse

Isotype:

IgG1

Immunogen Catalog Number:

AG28427

GenBank Accession Number:

BC021303

GeneID (NCBI):

824

UNIPROT ID:

P17655

Full Name:

calpain 2, (m/II) large subunit

Calculated MW:

700 aa, 80 kDa

Observed MW:

72-80 kDa

Purification Method:

Protein G purification

CloneNo.:

1E1F10

Recommended Dilutions:

IF/ICC 1:50-1:500

Excitation/Emission maxima wavelengths:

654 nm / 674 nm

Applications

Tested Applications:

IF/ICC

Species Specificity:

Human, Mouse, Rat

Positive Controls:

IF/ICC : HepG2 cells,

Background Information

Calpain 2(Calpain-2 catalytic subunit) is also named as CANPL2, CANPml, mCANP, FLJ39928 and belongs to the peptidase C2 family. N-terminal sequencing of CAPN2 purified from human liver indicates that the N-terminal methionine is removed, resulting in a mature 699-amino acid subunit with a calculated molecular mass of 79.9 kD(PMID:2852952). It is a calcium-regulated non-lysosomal thiol-protease which catalyzes limited proteolysis of substrates involved in cytoskeletal remodelling and signal transduction. It has 2 isoforms produced by alternative splicing with the molecular weight of 80 kDa and 71 kDa.

Storage

Storage:

Store at -20°C. Avoid exposure to light. Stable for one year after shipment.

Storage Buffer:

PBS with 50% Glycerol, 0.05% Proclin300, 0.5% BSA, pH 7.3.

Aliquoting is unnecessary for -20°C storage

For technical support and original validation data for this product please contact:

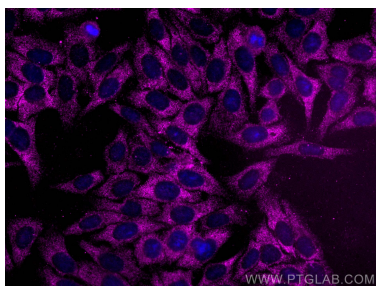
T: 1 (888) 4PTGLAB (1-888-478-4522) (toll free in USA), or 1(312) 455-8498 (outside USA)

E: proteintech@ptglab.com

W: ptglab.com

This product is exclusively available under Proteintech Group brand and is not available to purchase from any other manufacturer.

Selected Validation Data



Immunofluorescent analysis of (-20°C Ethanol) fixed HepG2 cells using CoraLite® Plus 647 CAPN2 antibody (CL647-66977, Clone: 1E1F10) at dilution of 1:200.