

For Research Use Only

# CoraLite® Plus 647-conjugated CDC27; APC3 Monoclonal antibody



Catalog Number: CL647-67239

## Basic Information

<b>Catalog Number:</b> CL647-67239	<b>GenBank Accession Number:</b> BC011656	<b>Purification Method:</b> Protein A purification
<b>Size:</b> 100ul , Concentration: 1000 µg/ml by Nanodrop;	<b>GeneID (NCBI):</b> 996	<b>CloneNo.:</b> 2F10G2
<b>Source:</b> Mouse	<b>Full Name:</b> cell division cycle 27 homolog (S. cerevisiae)	<b>Excitation/Emission maxima wavelengths:</b> 654 nm / 674 nm
<b>Isotype:</b> IgG2b	<b>Calculated MW:</b> 92 kDa	
<b>Immunogen Catalog Number:</b> AG25588	<b>Observed MW:</b> 90-100 kDa	

## Applications

**Tested Applications:**  
FC (Intra)

**Species Specificity:**  
Human, Mouse, Rat

## Background Information

CDC27/APC3 is a component of the anaphase-promoting complex (APC/cyclosome), which is composed of eight subunits and highly conserved in eukaryotic cells. The APC/cyclosome complex acts as a cell cycle-regulated E3 ubiquitin ligase which mediates ubiquitination and subsequent degradation of target proteins, and lead to the progression control through mitosis and the G1 phase of the cell cycle.

## Storage

**Storage:**  
Store at -20°C. Avoid exposure to light. Stable for one year after shipment.

**Storage Buffer:**  
PBS with 50% Glycerol, 0.05% Proclin300, 0.5% BSA, pH 7.3.

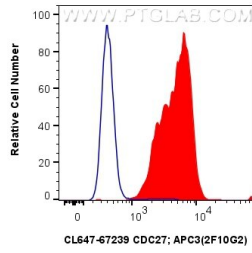
Aliquoting is unnecessary for -20°C storage

\*\*\* 20ul sizes contain 0.1% BSA

For technical support and original validation data for this product please contact:  
T: 1 (888) 4PTGLAB (1-888-478-4522) (toll free in USA), or 1(312) 455-8498 (outside USA)      E: proteintech@ptglab.com  
W: ptglab.com

This product is exclusively available under Proteintech Group brand and is not available to purchase from any other manufacturer.

## Selected Validation Data



1X10<sup>6</sup> K-562 cells were intracellularly stained with 0.4 ug CoraLite® Plus 647 Anti-Human CDC27; APC3 (CL647-67239, Clone:2F10G2) (red), or 0.4 ug CoraLite® Plus 647 Mouse IgG2b Isotype Control (MPC-11) (CL647-65128, Clone: MPC-11) (blue). Cells were fixed and permeabilized with True-Nuclear Transcription Factor Buffer Set.