

For Research Use Only

CoraLite® Plus 647-conjugated IgD Monoclonal antibody



Catalog Number: CL647-67538

Basic Information

Catalog Number: CL647-67538	GenBank Accession Number: BC021276	Purification Method: Protein A purification
Size: 100ul , Concentration: 1000 µg/ml by Nanodrop;	GeneID (NCBI): 3495	CloneNo.: 1D1B12
Source: Mouse	Full Name: immunoglobulin heavy constant delta	Recommended Dilutions: IF 1:200-1:800
Isotype: IgG2a	Calculated MW: 573 aa, 63 kDa	Excitation/Emission maxima wavelengths: 654 nm / 674 nm
Immunogen Catalog Number: AG9614	Observed MW: 55-70 kDa	

Applications

Tested Applications: IF	Positive Controls: IF : human tonsillitis tissue,
Species Specificity: Human	

Background Information

IgD is the major antigen receptor isotype on the surface of most peripheral B-cells. The function of IgD is to signal the B cells to be activated. The relative molecular mass and half-life of secreted IgD is 185 kDa and 2.8 days, respectively. Secreted IgD is produced as a monomeric antibody with two heavy chains of the delta (δ) class, and two Ig light chains. This antibody detects the heavy chain (55-70 kDa) of IgD and secreted IgD (185 kDa) .

Storage

Storage:
Store at -20°C. Avoid exposure to light.
Storage Buffer:
PBS with 50% Glycerol, 0.05% Proclin300, 0.5% BSA, pH 7.3.
Aliquoting is unnecessary for -20°C storage

*** 20ul sizes contain 0.1% BSA

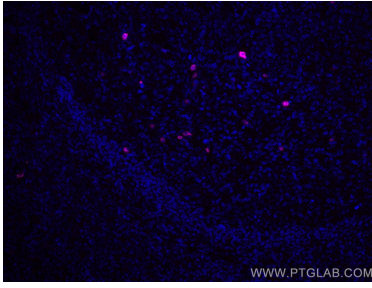
For technical support and original validation data for this product please contact:

T: 1 (888) 4PTGLAB (1-888-478-4522) (toll free
in USA), or 1(312) 455-8498 (outside USA)

E: proteintech@ptglab.com
W: ptglab.com

This product is exclusively available under Proteintech Group brand and is not available to purchase from any other manufacturer.

Selected Validation Data



Immunofluorescent analysis of (4% PFA) fixed human tonsillitis tissue using CoraLite® Plus 647 human IgD antibody (CL647-67538, Clone: 1D1B12) at dilution of 1:400.