

For Research Use Only

CoraLite® Plus 647-conjugated MTMR14 Monoclonal antibody

Catalog Number:CL647-67561



Basic Information

Catalog Number: CL647-67561	GenBank Accession Number: BC050626	Purification Method: Protein A purification
Size: 100ul , Concentration: 1000 ug/ml by Nanodrop;	GeneID (NCBI): 64419	CloneNo.: 1A8B2
Source: Mouse	UNIPROT ID: Q8NCE2	Recommended Dilutions: IF/ICC 1:50-1:500
Isotype: IgG2b	Full Name: myotubularin related protein 14	Excitation/Emission maxima wavelengths: 654 nm / 674 nm
Immunogen Catalog Number: AG6883	Calculated MW: 72 kDa	
	Observed MW: 74 kDa	

Applications

Tested Applications: IF/ICC	Positive Controls: IF/ICC : HEK-293 cells,
Species Specificity: Human, mouse, rat	

Background Information

MTMR14, also known as Jumpy, belongs to the MTM1/MTMRs family which has 15 members that divided into two subgroup: catalytically inactive and active. MTMR14 is a catalytically active member possessing an active phosphatase domain, that specifically dephosphorylates PI3P and phosphatidylinositol (3,5)-bisphosphate (PI3,5P2) at position 3 on inositol ring. A remarkable feature of the MTM1/MTMRs family is the association between a catalytically inactive member and a catalytically active member, which plays an important regulatory role. MTMR14 has 3 isoforms with molecular weight of 60-72 kDa, and also can be detected as a higher molecular weight due to the heterodimerization with other MTMR members.

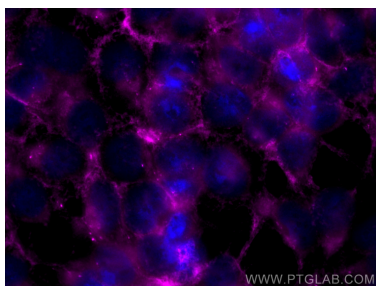
Storage

Storage:
Store at -20°C. Avoid exposure to light. Stable for one year after shipment.
Storage Buffer:
PBS with 50% Glycerol, 0.05% Proclin300, 0.5% BSA, pH 7.3.
Aliquoting is unnecessary for -20°C storage

For technical support and original validation data for this product please contact:
T: 1 (888) 4PTGLAB (1-888-478-4522) (toll free in USA), or 1(312) 455-8498 (outside USA)
E: proteintech@ptglab.com
W: ptglab.com

This product is exclusively available under Proteintech Group brand and is not available to purchase from any other manufacturer.

Selected Validation Data



Immunofluorescent analysis of (-20°C Ethanol) fixed HEK-293 cells using CoraLite® Plus 647 MTMR14 antibody (CL647-67561, Clone: 1A8B2) at dilution of 1:200.