

For Research Use Only

# CoraLite® Plus 647-conjugated P2RY1 Monoclonal antibody



Catalog Number:CL647-67654

## Basic Information

<b>Catalog Number:</b> CL647-67654	<b>GenBank Accession Number:</b> BC074785	<b>Purification Method:</b> Protein G purification
<b>Size:</b> 100ul , Concentration: 1000 µg/ml by Nanodrop;	<b>GeneID (NCBI):</b> 5028	<b>CloneNo.:</b> 1A1F3
<b>Source:</b> Mouse	<b>Full Name:</b> purinergic receptor P2Y, G-protein coupled, 1	<b>Recommended Dilutions:</b> IF 1:50-1:500
<b>Isotype:</b> IgG1	<b>Calculated MW:</b> 373 aa, 42 kDa	<b>Excitation/Emission maxima wavelengths:</b> 650 nm / 665 nm
<b>Immunogen Catalog Number:</b> AG12762		

## Applications

<b>Tested Applications:</b> IF	<b>Positive Controls:</b> IF : mouse brain tissue,
<b>Species Specificity:</b> Human, mouse	

## Background Information

### Storage

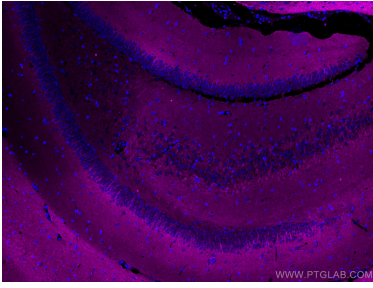
**Storage:**  
Store at -20°C. Avoid exposure to light.  
**Storage Buffer:**  
PBS with 50% Glycerol, 0.05% Proclin300, 0.5% BSA, pH 7.3.  
Aliquoting is unnecessary for -20°C storage

\*\*\* 20ul sizes contain 0.1% BSA

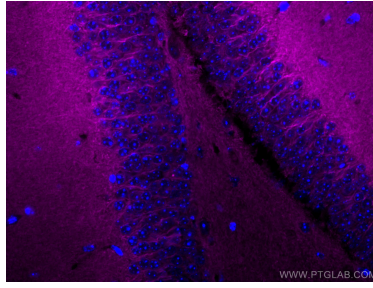
For technical support and original validation data for this product please contact:  
T: 1 (888) 4PTGLAB (1-888-478-4522) (toll free in USA), or 1(312) 455-8498 (outside USA) E: proteintech@ptglab.com W: ptglab.com

This product is exclusively available under Proteintech Group brand and is not available to purchase from any other manufacturer.

## Selected Validation Data



Immunofluorescent analysis of (4% PFA) fixed mouse brain tissue using CoraLite® Plus 647 P2RY1 antibody (CL647-67654, Clone: 1A1F3) at dilution of 1:200.



Immunofluorescent analysis of (4% PFA) fixed mouse brain tissue using CoraLite® Plus 647 P2RY1 antibody (CL647-67654, Clone: 1A1F3) at dilution of 1:200.