

For Research Use Only

CoraLite® Plus 647-conjugated ERP29 Monoclonal antibody

Catalog Number:CL647-67675



Basic Information

Catalog Number: CL647-67675	GenBank Accession Number: BC101495	Purification Method: Protein A purification
Size: 100ul , Concentration: 1000 ug/ml by Nanodrop;	GeneID (NCBI): 10961	CloneNo.: 1H8B2
Source: Mouse	UNIPROT ID: P30040	Recommended Dilutions: IF-P 1:50-1:500
Isotype: IgG2a	Full Name: endoplasmic reticulum protein 29	Excitation/Emission maxima wavelengths: 654 nm / 674 nm
Immunogen Catalog Number: AG30262	Calculated MW: 261 aa, 29 kDa	
	Observed MW: 29 kDa	

Applications

Tested Applications: IF-P	Positive Controls: IF-P : human kidney tissue,
Species Specificity: Human, Mouse, Rat	

Background Information

Endoplasmic reticulum resident protein 29 (ERP29) is a 29-kDa endoplasmic reticulum (ER) luminal protein. Structurally ERp29 is related to protein disulfide isomerases (PDI). However, it lacks the thioredoxin motif, suggesting that this protein does not function as a disulfide isomerase (PMID: 15500441). ERP29 plays an important role in the processing of secretory proteins within the (ER), possibly by participating in the folding of proteins in the ER. The secretion of thyroglobulin (TG) was found to be strongly regulated by ERP29 (PMID: 16380091).

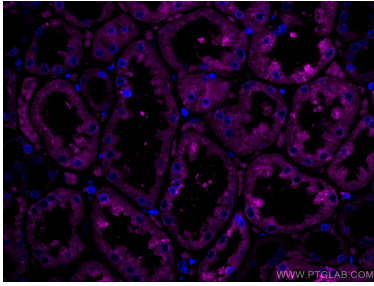
Storage

Storage:
Store at -20°C. Avoid exposure to light. Stable for one year after shipment.
Storage Buffer:
PBS with 50% Glycerol, 0.05% Proclin300, 0.5% BSA, pH 7.3.
Aliquoting is unnecessary for -20°C storage

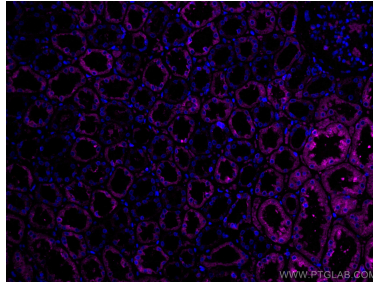
For technical support and original validation data for this product please contact:
T: 1 (888) 4PTGLAB (1-888-478-4522) (toll free in USA), or 1(312) 455-8498 (outside USA)
E: proteintech@ptglab.com
W: ptglab.com

This product is exclusively available under Proteintech Group brand and is not available to purchase from any other manufacturer.

Selected Validation Data



Immunofluorescent analysis of (4% PFA) fixed human kidney tissue using Coralite® Plus 647 ERP29 antibody (CL647-67675, Clone: 1H8B2) at dilution of 1:200.



Immunofluorescent analysis of (4% PFA) fixed human kidney tissue using Coralite® Plus 647 ERP29 antibody (CL647-67675, Clone: 1H8B2) at dilution of 1:200.