

For Research Use Only

# CoraLite® Plus 647-conjugated EIF3L Monoclonal antibody



Catalog Number:CL647-67719

## Basic Information

<b>Catalog Number:</b> CL647-67719	<b>GenBank Accession Number:</b> BC007510	<b>Purification Method:</b> Protein A purification
<b>Size:</b> 100ul , Concentration: 1000 µg/ml by Nanodrop;	<b>GeneID (NCBI):</b> 51386	<b>CloneNo.:</b> 1B11A10
<b>Source:</b> Mouse	<b>Full Name:</b> eukaryotic translation initiation factor 3, subunit L	<b>Excitation/Emission maxima wavelengths:</b> 654 nm / 674 nm
<b>Isotype:</b> IgG2a	<b>Calculated MW:</b> 67 kDa	
<b>Immunogen Catalog Number:</b> AG26680	<b>Observed MW:</b> 67 kDa	

## Applications

**Tested Applications:**  
FC (Intra)

**Species Specificity:**  
Human, Mouse, Rat

## Background Information

### Storage

**Storage:**  
Store at -20°C. Avoid exposure to light. Stable for one year after shipment.  
**Storage Buffer:**  
PBS with 50% Glycerol, 0.05% Proclin300, 0.5% BSA, pH 7.3.  
Aliquoting is unnecessary for -20°C storage

\*\*\* 20ul sizes contain 0.1% BSA

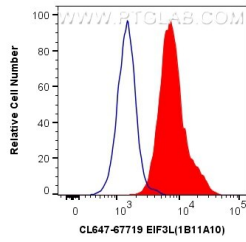
For technical support and original validation data for this product please contact:

T: 1 (888) 4PTGLAB (1-888-478-4522) (toll free  
in USA), or 1(312) 455-8498 (outside USA)

E: [proteintech@ptglab.com](mailto:proteintech@ptglab.com)  
W: [ptglab.com](http://ptglab.com)

This product is exclusively available under Proteintech Group brand and is not available to purchase from any other manufacturer.

## Selected Validation Data



1X10<sup>6</sup> HeLa cells were intracellularly stained with 0.8 ug CoraLite® Plus 647 Anti-Human EIF3L (CL647-67719, Clone:1B11A10) (red), or 0.8 ug CoraLite® Plus 647 Mouse IgG2a Isotype Control (C1.18.4) (CL647-65208, Clone: C 1.18.4) (blue). Cells were fixed with 4% PFA and permeabilized with Flow Cytometry Perm Buffer (PF00011-C).