

For Research Use Only

CoraLite® Plus 647-conjugated EED Monoclonal antibody

Catalog Number: CL647-67756



Basic Information

Catalog Number: CL647-67756	GenBank Accession Number: BC068995	Purification Method: Protein A purification
Size: 100ul , Concentration: 1000 ug/ml by Nanodrop;	GeneID (NCBI): 8726	CloneNo.: 1D11D4
Source: Mouse	UNIPROT ID: O75530	Recommended Dilutions: IF-P 1:50-1:500
Isotype: IgG2b	Full Name: embryonic ectoderm development	Excitation/Emission maxima wavelengths: 654 nm / 674 nm
Immunogen Catalog Number: AG10369	Calculated MW: 466 aa, 53 kDa	

Applications

Tested Applications: IF-P, FC (Intra)	Positive Controls: IF-P : mouse testis tissue,
Species Specificity: human, mouse	

Background Information

EED is a member of the Polycomb-group (PcG) family. PcG family members form multimeric protein complexes, which are involved in maintaining the transcriptional repressive state of genes over successive cell generations. This protein interacts with enhancer of zeste 2, the cytoplasmic tail of integrin beta7, immunodeficiency virus type 1 (HIV-1) MA protein, and histone deacetylase proteins. This protein mediates repression of gene activity through histone deacetylation, and may act as a specific regulator of integrin function. EED has three isoforms, with the molecular weight of isoforms 1/2/3: 50/53/46 kDa.

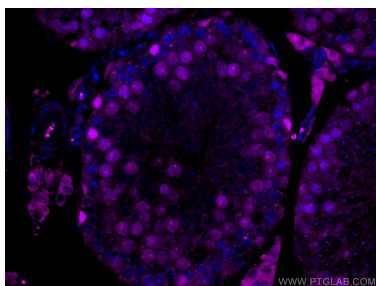
Storage

Storage:
Store at -20°C. Avoid exposure to light. Stable for one year after shipment.
Storage Buffer:
PBS with 50% Glycerol, 0.05% Proclin300, 0.5% BSA, pH 7.3.
Aliquoting is unnecessary for -20°C storage

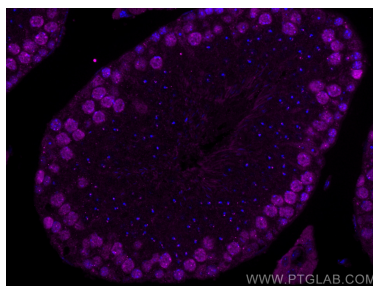
For technical support and original validation data for this product please contact:
T: 1 (888) 4PTGLAB (1-888-478-4522) (toll free in USA), or 1(312) 455-8498 (outside USA)
E: proteintech@ptglab.com
W: ptglab.com

This product is exclusively available under Proteintech Group brand and is not available to purchase from any other manufacturer.

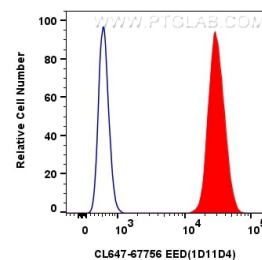
Selected Validation Data



Immunofluorescent analysis of (4% PFA) fixed mouse testis tissue using CoraLite® Plus 647 EED antibody (CL647-67756, Clone: 1D11D4) at dilution of 1:200.



Immunofluorescent analysis of (4% PFA) fixed paraffin-embedded mouse testis tissue using CoraLite® Plus 647 EED antibody (CL647-67756, Clone: 1D11D4) at dilution of 1:200. Heat mediated antigen retrieval with Tris-EDTA buffer (pH 9.0).



1x10⁶ HeLa cells were intracellularly stained with 0.4 ug CoraLite® Plus 647-conjugated EED Monoclonal antibody (CL647-67756, Clone:1D11D4)(red), or 0.4 ug CoraLite® Plus 647 Mouse IgG2b isotype control (11B8C4) (CL647-66360-3, Clone: 11B8C4) (blue). Cells were fixed and permeabilized with Transcription Factor Staining Buffer Kit (PF00011).