

For Research Use Only

CoraLite® Plus 647-conjugated IgG Heavy chain Monoclonal antibody

Catalog Number: CL647-67760



Basic Information

Catalog Number:

CL647-67760

GenBank Accession Number:

GeneID (NCBI):

Size:

100ul , Concentration: 1000 ug/ml by
Nanodrop;

Full Name:

Calculated MW:

155 kDa

Source:

Mouse

Observed MW:

~50 kDa

Isotype:

IgG2a

Purification Method:

Protein A purification

CloneNo.:

1C6B4

Recommended Dilutions:

WB 1:500-1:1000

IF-P 1:50-1:500

Excitation/Emission maxima
wavelengths:

654 nm / 674 nm

Applications

Tested Applications:

WB, IF-P

Species Specificity:

Human

Positive Controls:

WB : human plasma,

IF-P : human tonsillitis tissue,

Background Information

This antibody detects the heavy chain of human IgG.

Storage

Storage:

Store at -20°C. Avoid exposure to light. Stable for one year after shipment.

Storage Buffer:

PBS with 50% Glycerol, 0.05% Proclin300, 0.5% BSA, pH 7.3.

Aliquoting is unnecessary for -20°C storage

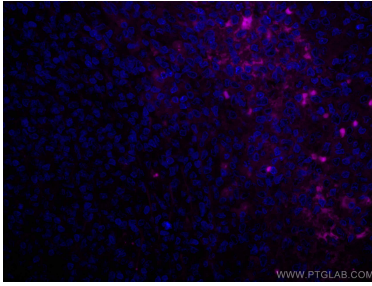
For technical support and original validation data for this product please contact:

T: 1 (888) 4PTGLAB (1-888-478-4522) (toll free
in USA), or 1(312) 455-8498 (outside USA)

E: proteintech@ptglab.com
W: ptglab.com

This product is exclusively available under Proteintech
Group brand and is not available to purchase from any
other manufacturer.

Selected Validation Data



Immunofluorescent analysis of (4% PFA) fixed human tonsillitis tissue using CoraLite® Plus 647 Human IgG Heavy chain antibody (CL647-67760, Clone: 1C6B4) at dilution of 1:200.