

For Research Use Only

CoraLite® Plus 647-conjugated IgG Kappa chain Monoclonal antibody



Catalog Number:CL647-67761

Basic Information

Catalog Number: CL647-67761	GenBank Accession Number: GeneID (NCBI):	Purification Method: Protein G purification
Size: 100ul , Concentration: 1000 µg/ml by Nanodrop;	Full Name: Calculated MW: 155 kDa	CloneNo.: 4D11F7
Source: Mouse	Observed MW: ~25 kDa	Recommended Dilutions: WB 1:500-1:2000
Isotype: IgG1		Excitation/Emission maxima wavelengths: 654 nm / 674 nm

Applications

Tested Applications: WB	Positive Controls: WB : human plasma,
Species Specificity: Human	

Background Information

This antibody detects the Kappa chain of human IgG.

Storage

Storage:
Store at -20°C. Avoid exposure to light. Stable for one year after shipment.
Storage Buffer:
PBS with 50% Glycerol, 0.05% Proclin300, 0.5% BSA, pH 7.3.
Aliquoting is unnecessary for -20°C storage

*** 20ul sizes contain 0.1% BSA

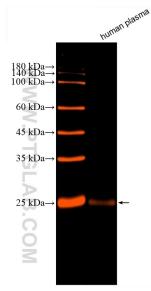
For technical support and original validation data for this product please contact:

T: 1 (888) 4PTGLAB (1-888-478-4522) (toll free in USA), or 1(312) 455-8498 (outside USA)

E: proteintech@ptglab.com
W: ptglab.com

This product is exclusively available under Proteintech Group brand and is not available to purchase from any other manufacturer.

Selected Validation Data



Human plasma were subjected to SDS PAGE followed by western blot with CL647-67761 (Human IgG Kappa chain antibody) at dilution of 1:1000 incubated at room temperature for 1.5 hours.