

For Research Use Only

# CoraLite® Plus 647-conjugated ANKRD1 Monoclonal antibody



Catalog Number:CL647-67775

## Basic Information

<b>Catalog Number:</b> CL647-67775	<b>GenBank Accession Number:</b> BC018667	<b>Purification Method:</b> Protein A purification
<b>Size:</b> 100ul , Concentration: 1000 µg/ml by Nanodrop;	<b>GeneID (NCBI):</b> 27063	<b>CloneNo.:</b> 1F11F1
<b>Source:</b> Mouse	<b>Full Name:</b> ankyrin repeat domain 1 (cardiac muscle)	<b>Recommended Dilutions:</b> IF 1:500-1:2000
<b>Isotype:</b> IgG2b	<b>Calculated MW:</b> 319 aa, 36 kDa	<b>Excitation/Emission maxima wavelengths:</b> 654 nm / 674 nm
<b>Immunogen Catalog Number:</b> AG29974		

## Applications

<b>Tested Applications:</b> IF	<b>Positive Controls:</b> IF : A431 cells,
<b>Species Specificity:</b> Human, mouse, rat, rabbit, pig	

## Background Information

Ankyrin repeat domain-containing protein 1(ANKRD1) belongs to the conserved muscle ankyrin repeat protein(MARP) family, whose expression is induced in response to physiologic stress, injury and hypertrophy. Thus its expression mainly in activated vascular endothelial cells. ANKRD1 may regulate SMC proliferation through the CDKN1A pathway. It functions as a nuclear transcription repressor that regulate cardiac gene's expression

## Storage

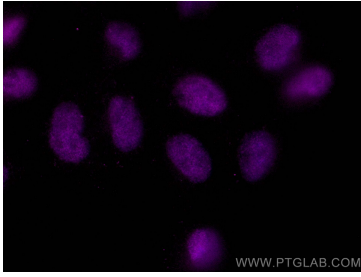
**Storage:**  
Store at -20°C. Avoid exposure to light. Stable for one year after shipment.  
**Storage Buffer:**  
PBS with 50% Glycerol, 0.05% Proclin300, 0.5% BSA, pH 7.3.  
Aliquoting is unnecessary for -20°C storage

\*\*\* 20ul sizes contain 0.1% BSA

For technical support and original validation data for this product please contact:  
T: 1 (888) 4PTGLAB (1-888-478-4522) (toll free in USA), or 1(312) 455-8498 (outside USA)  
E: proteintech@ptglab.com  
W: ptglab.com

This product is exclusively available under Proteintech Group brand and is not available to purchase from any other manufacturer.

## Selected Validation Data



Immunofluorescent analysis of (4% PFA) fixed A431 cells using Coralite® Plus 647 ANKRD1 antibody (CL647-67775, Clone: 1F11F1 ) at dilution of 1:1000.