

For Research Use Only

# CoraLite® Plus 647-conjugated SERBP1 Monoclonal antibody

Catalog Number: CL647-67792



## Basic Information

<b>Catalog Number:</b> CL647-67792	<b>GenBank Accession Number:</b> BC008045	<b>Purification Method:</b> Protein G purification
<b>Size:</b> 100ul , Concentration: 1000 ug/ml by Nanodrop;	<b>GeneID (NCBI):</b> 26135	<b>CloneNo.:</b> 1D4H1
<b>Source:</b> Mouse	<b>UNIPROT ID:</b> Q8NC51	<b>Recommended Dilutions:</b> IF-P 1:50-1:500
<b>Isotype:</b> IgG1	<b>Full Name:</b> SERPINE1 mRNA binding protein 1	<b>Excitation/Emission maxima wavelengths:</b> 654 nm / 674 nm
<b>Immunogen Catalog Number:</b> AG30202	<b>Calculated MW:</b> 45 kDa	
	<b>Observed MW:</b> 50 kDa	

## Applications

<b>Tested Applications:</b> IF-P	<b>Positive Controls:</b> IF-P : human liver cancer tissue,
<b>Species Specificity:</b> Human, Mouse, Rat	

## Background Information

The plasminogen activator system (PA) plays an important role in invasion and metastasis of solid tumors. The PA Inhibitor type 1 (PAI-1) is the main physiologic regulator of plasminogen activation. PAI-RBP1 (PAI-1 mRNA Binding Protein 1, also named SERBP1), is an RNA-binding protein containing an RG-rich domain and an RGG box domain that might be methylated by protein arginine N-methyltransferases (PRMTs). SERBP1 was identified as an interacting partner of a Tudor domain containing protein TDRD3, and can localize to cytoplasmic stress granules (SGs).

## Storage

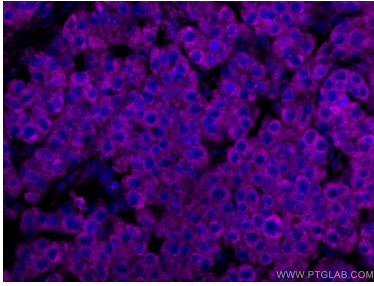
**Storage:**  
Store at -20°C. Avoid exposure to light. Stable for one year after shipment.  
**Storage Buffer:**  
PBS with 50% Glycerol, 0.05% Proclin300, 0.5% BSA, pH 7.3.  
Aliquoting is unnecessary for -20°C storage

For technical support and original validation data for this product please contact:  
T: 1 (888) 4PTGLAB (1-888-478-4522) (toll free in USA), or 1(312) 455-8498 (outside USA)  
E: [proteintech@ptglab.com](mailto:proteintech@ptglab.com)  
W: [ptglab.com](http://ptglab.com)

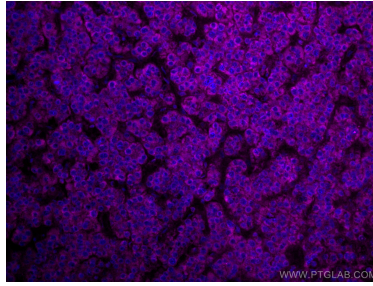
This product is exclusively available under Proteintech Group brand and is not available to purchase from any other manufacturer.

---

## Selected Validation Data



Immunofluorescent analysis of (4% PFA) fixed human liver cancer tissue using CoraLite® Plus 647 SERBP1 antibody (CL647-67792, Clone: 1D4H1) at dilution of 1:200. DAPI (blue).



Immunofluorescent analysis of (4% PFA) fixed human liver cancer tissue using CoraLite® Plus 647 SERBP1 antibody (CL647-67792, Clone: 1D4H1) at dilution of 1:200.