

For Research Use Only

CoraLite® Plus 647-conjugated SMCR7L Monoclonal antibody

Catalog Number: CL647-67808



Basic Information

Catalog Number: CL647-67808	GenBank Accession Number: BC002587	Purification Method: Protein A purification
Size: 100ul , Concentration: 1000 ug/ml by Nanodrop;	GeneID (NCBI): 54471	CloneNo.: 3B3G3
Source: Mouse	UNIPROT ID: Q9NQG6	Recommended Dilutions: IF-P 1:50-1:500
Isotype: IgG2b	Full Name: Smith-Magenis syndrome chromosome region, candidate 7-like	Excitation/Emission maxima wavelengths: 654 nm / 674 nm
Immunogen Catalog Number: AG13775	Calculated MW: 463 aa, 51 kDa	
	Observed MW: 48-51 kDa	

Applications

Tested Applications: IF-P	Positive Controls: IF-P: mouse testis tissue,
Species Specificity: human, mouse, rat	

Background Information

Human SMCR7L gene encodes, MID51, the mitochondrial dynamic protein of 51 kDa (also called mitochondrial elongation factor 1, MIEF1). MID51 is a single-pass membrane protein anchored to the mitochondrial outer membrane and regulates mitochondrial morphology. Mitochondrial morphology is controlled by two opposing processes: fusion and fission. Elevated MID51 levels induce extensive mitochondrial fusion, whereas depletion of MID51 causes mitochondrial fragmentation. MID51 interacts with and recruits Drp1 to mitochondria, suggesting a critical role of MID51 in regulation of mitochondrial fusion-fission machinery in vertebrates.

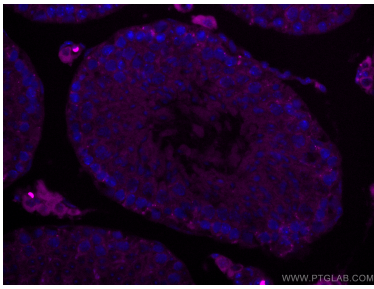
Storage

Storage:
Store at -20°C. Avoid exposure to light. Stable for one year after shipment.
Storage Buffer:
PBS with 50% Glycerol, 0.05% Proclin300, 0.5% BSA, pH 7.3.
Aliquoting is unnecessary for -20°C storage

For technical support and original validation data for this product please contact:
T: 1 (888) 4PTGLAB (1-888-478-4522) (toll free in USA), or 1(312) 455-8498 (outside USA)
E: proteintech@ptglab.com
W: ptglab.com

This product is exclusively available under Proteintech Group brand and is not available to purchase from any other manufacturer.

Selected Validation Data



Immunofluorescent analysis of (4% PFA) fixed mouse testis tissue using CoraLite® Plus 647 SMCR7L antibody (CL647-67808, Clone: 3B3G3) at dilution of 1:200.