

For Research Use Only

CoraLite® Plus 647-conjugated LARP1 Monoclonal antibody



Catalog Number:CL647-67810

Basic Information

Catalog Number: CL647-67810	GenBank Accession Number: BC033856	Purification Method: Protein G purification
Size: 100ul , Concentration: 1000 µg/ml by Nanodrop;	GeneID (NCBI): 23367	CloneNo.: 2E9F2
Source: Mouse	Full Name: La ribonucleoprotein domain family, member 1	Recommended Dilutions: IF 1:50-1:500
Isotype: IgG1	Calculated MW: 1096 aa, 124 kDa	Excitation/Emission maxima wavelengths: 650 nm / 665 nm
Immunogen Catalog Number: AG29993	Observed MW: 140-150 kDa	

Applications

Tested Applications: IF	Positive Controls: IF : HepG2 cells,
Species Specificity: Human, mouse, rat	

Background Information

LARP1, full named as La-related Protein 1, is an oncogenic RNA-binding protein required for ribosome biogenesis and cancer cell survival. (PMID: 32286153)It's has been proposed to function downstream of mTORC1 to regulate the translation of 5'TOP mRNAs such as those encoding ribosome proteins (RP). (PMID: 28650797) LARP1 has 2 isoforms with MW of 123-150kDa. With CL647, immunoflorescence detected location in cytoplasm.

Storage

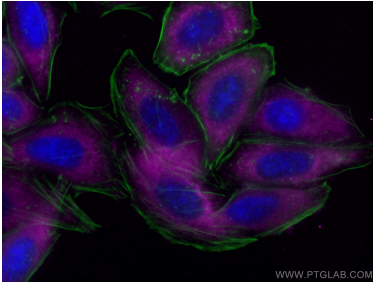
Storage:
Store at -20°C. Avoid exposure to light.
Storage Buffer:
PBS with 50% Glycerol, 0.05% Proclin300, 0.5% BSA, pH 7.3.
Aliquoting is unnecessary for -20°C storage

*** 20ul sizes contain 0.1% BSA

For technical support and original validation data for this product please contact:
T: 1 (888) 4PTGLAB (1-888-478-4522) (toll free in USA), or 1(312) 455-8498 (outside USA) E: proteintech@ptglab.com W: ptglab.com

This product is exclusively available under Proteintech Group brand and is not available to purchase from any other manufacturer.

Selected Validation Data



Immunofluorescent analysis of (-20°C Methanol) fixed HepG2 cells using CoraLite® Plus 647 LARP1 antibody (CL647-67810, Clone: 2E9F2) at dilution of 1:100, CoraLite® 488 Beta Actin antibody (CL488-66009, Clone: 2D4H5, green). DAPI (blue)