

For Research Use Only

CoraLite® Plus 647-conjugated Synaptophysin Monoclonal antibody



Catalog Number: CL647-67864

Basic Information

Catalog Number: CL647-67864	GenBank Accession Number: BC064550	Purification Method: Protein G purification
Size: 100ul , Concentration: 1000 µg/ml by Nanodrop;	GeneID (NCBI): 6855	CloneNo.: 4E12C4
Source: Mouse	Full Name: synaptophysin	Recommended Dilutions: IF 1:50-1:500
Isotype: IgG1	Calculated MW: 313 aa, 34 kDa	Excitation/Emission maxima wavelengths: 650 nm / 665 nm
Immunogen Catalog Number: AG11803		

Applications

Tested Applications: IF	Positive Controls: IF : mouse brain tissue,
Species Specificity: Human, Pig, Mouse, Rat	

Background Information

Synaptophysin (SYP, also known as major synaptic vesicle protein p38) is a 38-kDa integral membrane glycoprotein that regulates synaptic vesicle endocytosis. It is the most abundant synaptic vesicle protein by mass. Synaptophysin is present in neuroendocrine cells and neurons that participate in synaptic transmission. Synaptophysin is a useful marker for identification of neuroendocrine cells and neoplasms. (PMID: 3010302; 21658579)

Storage

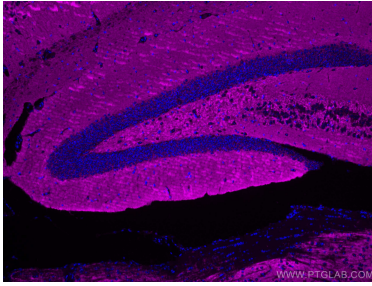
Storage:
Store at -20°C. Avoid exposure to light.
Storage Buffer:
PBS with 50% Glycerol, 0.05% Proclin300, 0.5% BSA, pH 7.3.
Aliquoting is unnecessary for -20°C storage

*** 20ul sizes contain 0.1% BSA

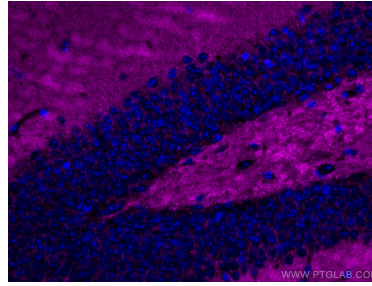
For technical support and original validation data for this product please contact:
T: 1 (888) 4PTGLAB (1-888-478-4522) (toll free in USA), or 1(312) 455-8498 (outside USA)
E: proteintech@ptglab.com
W: ptglab.com

This product is exclusively available under Proteintech Group brand and is not available to purchase from any other manufacturer.

Selected Validation Data



Immunofluorescent analysis of (4% PFA) fixed mouse brain tissue using CoraLite® Plus 647 Synaptophysin antibody (CL647-67864, Clone: 4E12C4) at dilution of 1:200.



Immunofluorescent analysis of (4% PFA) fixed mouse brain tissue using CoraLite® Plus 647 Synaptophysin antibody (CL647-67864, Clone: 4E12C4) at dilution of 1:200.