

For Research Use Only

CoraLite® Plus 647-conjugated Centrin-1 Monoclonal antibody

Catalog Number: CL647-68433



Basic Information

Catalog Number: CL647-68433	GenBank Accession Number: BC029515	Purification Method: Protein A purification
Size: 100ul , Concentration: 1000 ug/ml by Nanodrop;	GeneID (NCBI): 1068	CloneNo.: 1G8D10
Source: Mouse	UNIPROT ID: Q12798	Recommended Dilutions: IF/ICC 1:50-1:500
Isotype: IgG2b	Full Name: centrin, EF-hand protein, 1	Excitation/Emission maxima wavelengths: 654 nm / 674 nm
Immunogen Catalog Number: AG3529	Calculated MW: 172 aa, 20 kDa	
	Observed MW: 20 kDa	

Applications

Tested Applications: IF/ICC	Positive Controls: IF/ICC : hTERT-RPE1 cells,
Species Specificity: human	

Background Information

EF-hand type Ca²⁺-binding proteins consists of several family members, including Centrin-1, Centrin-2 and Centrin-3. The Centrin proteins are ubiquitously expressed cytoskeletal components that show increased expression during cell differentiation. Centrin-1 plays important roles in the determination of centrosome position and segregation, and in the process of microtubule severing. Centrin-1 is localized to the centrosome of interphase cells, and redistributes to the region of the spindle poles during mitosis, reflecting the dynamic behavior of the centrosome during the cell cycle.

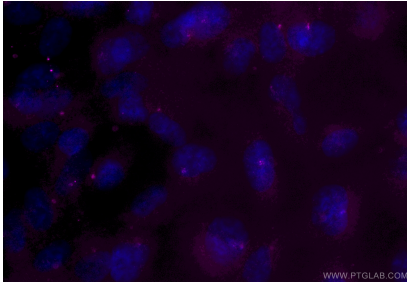
Storage

Storage:
Store at -20°C. Avoid exposure to light. Stable for one year after shipment.
Storage Buffer:
PBS with 50% glycerol, 0.05% Proclin300, 0.5% BSA, pH7.3
Aliquoting is unnecessary for -20°C storage

For technical support and original validation data for this product please contact:
T: 1 (888) 4PTGLAB (1-888-478-4522) (toll free in USA), or 1(312) 455-8498 (outside USA)
E: proteintech@ptglab.com
W: ptglab.com

This product is exclusively available under Proteintech Group brand and is not available to purchase from any other manufacturer.

Selected Validation Data



Immunofluorescent analysis of (-20°C Methanol)
fixed hTERT-RPE1 cells using CoraLite® Plus 647
Centrin 1 antibody (CL647-68433, Clone: 1G8D10)
at dilution of 1:100.