

For Research Use Only



CoraLite® Plus 647-conjugated smooth muscle actin specific Recombinant antibody

Catalog Number: CL647-80008

Basic Information

Catalog Number: CL647-80008	GenBank Accession Number: NM_001613	Purification Method: Protein A purification
Size: 100ul , Concentration: 1000 µg/ml by Nanodrop;	GeneID (NCBI): 59	CloneNo.: 5H7
Source: Rabbit	Full Name: actin, alpha 2, smooth muscle, aorta	Recommended Dilutions: IF 1:50-1:500
Isotype: IgG	Calculated MW: 42 kDa	Excitation/Emission maxima wavelengths: 654 nm / 674 nm

Applications

Tested Applications: IF	Positive Controls: IF : mouse small intestine tissue,
Species Specificity: mouse, human, rat, chicken, pig, zebrafish	

Background Information

ACTA2 (also known as α -smooth muscle actin or α -SMA) belongs to the actin family. Actins are highly conserved proteins that are involved in various types of cell motility and are ubiquitously expressed in all eukaryotic cells. ACTA2 is primarily expressed in vascular smooth muscle and anti-ACTA2 is commonly used to marker smooth muscle cells.

Storage

Storage:
Store at -20°C. Avoid exposure to light. Stable for one year after shipment.
Storage Buffer:
PBS with 50% Glycerol, 0.05% Proclin300, 0.5% BSA, pH 7.3.
Aliquoting is unnecessary for -20°C storage

*** 20ul sizes contain 0.1% BSA

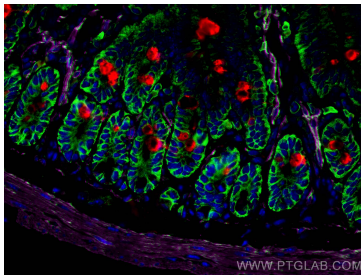
For technical support and original validation data for this product please contact:

T: 1 (888) 4PTGLAB (1-888-478-4522) (toll free
in USA), or 1(312) 455-8498 (outside USA)

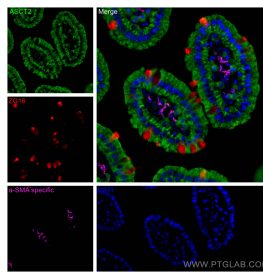
E: proteintech@ptglab.com
W: ptglab.com

This product is exclusively available under Proteintech Group brand and is not available to purchase from any other manufacturer.

Selected Validation Data



Immunofluorescent analysis of (4% PFA) fixed mouse small intestine tissue using CoraLite® Plus 647 smooth muscle actin specific antibody (CL647-80008, Clone: 5H7) at dilution of 1:200, ZG16 antibody (67389-1-Ig, Clone: 1A7B9, red), ASCT2 antibody (20350-1-AP, green).



Immunofluorescent analysis of (4% PFA) fixed mouse small intestine tissue using CoraLite® Plus 647 smooth muscle actin specific antibody (CL647-80008, Clone: 5H7) at dilution of 1:200, ZG16 antibody (67389-1-Ig, Clone: 1A7B9, red), ASCT2 antibody (20350-1-AP, green).