

For Research Use Only

# CoraLite® Plus 647-conjugated Phospho-TAU (Thr231) Recombinant antibody

Catalog Number: CL647-80101-7



## Basic Information

### Catalog Number:

CL647-80101-7

### Size:

100ul , Concentration: 1000 ug/ml by  
Nanodrop;

### Source:

Rabbit

### Isotype:

IgG

### GenBank Accession Number:

BC000558

### GeneID (NCBI):

4137

### UNIPROT ID:

P10636

### Full Name:

microtubule-associated protein tau

### Calculated MW:

37-46, 79-81 kDa

### Observed MW:

50-80 kDa

### Purification Method:

Protein A purification

### CloneNo.:

240632B1

### Excitation/Emission maxima wavelengths:

654 nm / 674 nm

## Applications

### Tested Applications:

FC (Intra)

### Species Specificity:

human

## Background Information

Tau (tubulin-associated unit) is a microtubule-associated protein (also known as MAPT), expressed mainly in neurons of the central nervous system. Its primary function is to modulate microtubule dynamics for maintaining axonal cytoskeleton. The Tau protein has six isoforms produced from a single gene through alternative RNA splicing. Isoforms differ in number of inserts at the N-terminal half and the number of repeats at the C-terminal half (3 repeat-3R; 4 repeat-4R). Tau is hyperphosphorylated during aging and in age-related neurodegenerative diseases such as Alzheimer's disease (AD) and fronto-temporal dementia. Hyperphosphorylation of Tau leads to the formation of neurofibrillary tangles (NFT) in the neurons and glia cells, which is one of the hallmarks of AD.

## Storage

### Storage:

Store at -20°C. Avoid exposure to light. Stable for one year after shipment.

### Storage Buffer:

PBS with 50% Glycerol, 0.05% Proclin300, 0.5% BSA, pH 7.3.

Aliquoting is unnecessary for -20°C storage

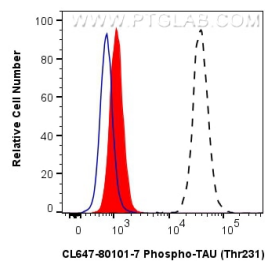
For technical support and original validation data for this product please contact:

T: 1 (888) 4PTGLAB (1-888-478-4522) (toll free  
in USA), or 1(312) 455-8498 (outside USA)

E: [proteintech@ptglab.com](mailto:proteintech@ptglab.com)  
W: [ptglab.com](http://ptglab.com)

This product is exclusively available under Proteintech  
Group brand and is not available to purchase from any  
other manufacturer.

## Selected Validation Data



1X10<sup>6</sup> SH-SY5Y cells untreated (dashed lines) or treated with  $\lambda$  phosphatase which intracellularly stained with 0.25  $\mu$ g CoraLite® Plus 647 Phospho-TAU (Thr231) Recombinant Antibody (CL647-80101-7, Clone:240632B1)(red), or 0.25  $\mu$ g CoraLite® Plus 647 Rabbit IgG Isotype Control RecAb (CL647-98136, Clone: 240953C9) (blue). Cells were fixed with 4% PFA and permeabilized with 90% MeOH.