

For Research Use Only

# CoraLite® Plus 647-conjugated Phospho-RPS6KA1 (Ser380) Recombinant antibody



Catalog Number:CL647-80108

## Basic Information

<b>Catalog Number:</b> CL647-80108	<b>GenBank Accession Number:</b> BC014966	<b>Purification Method:</b> Protein A purification
<b>Size:</b> 100ul , Concentration: 1000 µg/ml by Nanodrop;	<b>GeneID (NCBI):</b> 6195	<b>CloneNo.:</b> 7F23
<b>Source:</b> Rabbit	<b>Full Name:</b> ribosomal protein S6 kinase, 90kDa, polypeptide 1	<b>Excitation/Emission maxima wavelengths:</b> 650 nm / 665 nm
<b>Isotype:</b> IgG	<b>Calculated MW:</b> 735 aa, 83 kDa	
	<b>Observed MW:</b> 83-90 kDa	

## Applications

**Tested Applications:**  
FC (Intra)

**Species Specificity:**  
Human, Mouse

## Background Information

The 90 kDa ribosomal S6 kinases (RSK1-4) are a family of widely expressed serine/threonine kinases and play an important role in the MAPK signaling cascade and act downstream of ERK1/2 signaling. It can mediate mitogenic and stress-induced activation of the transcription factors CREB1, ETV1/ERB1 and NR4A1/NUR77. RSK1 (RPS6KA1) is also designated as p90RSK associated with cellular proliferation, survival and differentiation. It has been reported that the phosphorylation of RPS6KA1 at Ser380 is involved in autophosphorylation by activation of the C-terminal kinase domain. (PMID: 16458888, 30813401, 17259979, 10679322)

## Storage

**Storage:**  
Store at -20°C. Avoid exposure to light.

**Storage Buffer:**  
PBS with 50% Glycerol, 0.05% Proclin300, 0.5% BSA, pH 7.3.

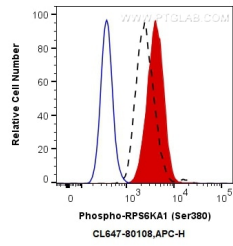
Aliquoting is unnecessary for -20°C storage

\*\*\* 20ul sizes contain 0.1% BSA

For technical support and original validation data for this product please contact:  
T: 1 (888) 4PTGLAB (1-888-478-4522) (toll free in USA), or 1(312) 455-8498 (outside USA) E: proteintech@ptglab.com W: ptglab.com

This product is exclusively available under Proteintech Group brand and is not available to purchase from any other manufacturer.

## Selected Validation Data



1X10<sup>6</sup> Jurkat cells untreated (dashed lines) or treated with TPA (red) were intracellularly stained with 0.13 ug CoraLite® Plus 647 Anti-Human Phospho-RPS6KA1 (Ser380) (CL647-80108, Clone:7F23) (red), or 0.13 ug Control Antibody (blue). Cells were fixed with 4% PFA and permeabilized with 90% MeOH.