

For Research Use Only



CoraLite® Plus 647-conjugated Phospho-STAT5A (Tyr694)/STAT5B (Tyr699) Recombinant antibody

Catalog Number:CL647-80115

Basic Information

Catalog Number: CL647-80115	GenBank Accession Number: BC027036	Purification Method: Protein A purification
Size: 100ul , Concentration: 1000 ug/ml by Nanodrop;	GeneID (NCBI): 6776	CloneNo.: 2P21
Source: Rabbit	UNIPROT ID: P42229	Excitation/Emission maxima wavelengths: 654 nm / 674 nm
Isotype: IgG	Full Name: signal transducer and activator of transcription 5A	
	Calculated MW: 794 aa, 92 kDa	
	Observed MW: 90-95 kDa	

Applications

Tested Applications:
FC (Intra)

Species Specificity:
human

Background Information

STAT5A, also named as STAT5, belongs to the transcription factor STAT family. In response to cytokines and growth factors, STAT family members are phosphorylated by the receptor associated kinases, and then form homo- or heterodimers that translocate to the cell nucleus where they act as transcription activators. STAT5A is activated by, and mediates the responses of many cell ligands, such as IL2, IL3, IL7 GM-CSF, erythropoietin, thrombopoietin, and different GHs. Phosphorylation at Tyr694 is obligatory for Stat5 activation. Activation of STAT5A in myeloma and lymphoma associated with a TEL/JAK2 gene fusion is independent of cell stimulus and has been shown to be essential for the tumorigenesis. The mouse counterpart of human STAT5A is found to induce the expression of BCL2L1/BCL-X(L), which suggests the antiapoptotic function of STAT5A in cells.

Storage

Storage:
Store at -20°C. Avoid exposure to light. Stable for one year after shipment.

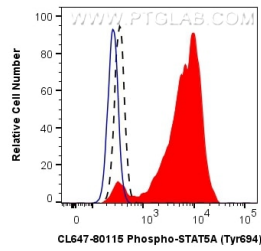
Storage Buffer:
PBS with 50% Glycerol, 0.05% Proclin300, 0.5% BSA, pH 7.3.

Aliquoting is unnecessary for -20°C storage

For technical support and original validation data for this product please contact:
T: 1 (888) 4PTGLAB (1-888-478-4522) (toll free in USA), or 1(312) 455-8498 (outside USA)
E: proteintech@ptglab.com
W: ptglab.com

This product is exclusively available under Proteintech Group brand and is not available to purchase from any other manufacturer.

Selected Validation Data



1X10⁶ TF-1 cells untreated (dashed lines) or treated with GM-CSF (red) were intracellularly stained with 0.06 ug CoraLite® Plus 647 Anti-Human Phospho-STAT5A (Tyr694)/STAT5B (Tyr699) (CL647-80115, Clone:2P21), or 0.06 ug Control Antibody (blue, solid line). Cells were fixed with 4% PFA and permeabilized with 90% MeOH.